

Long Island
Resorts





Long Island Resorts



Four Hundred Miles of Shore Line
on Ocean, Sound and Bays

"Where Cooling Breezes Blow"

Issued by the Passenger Department

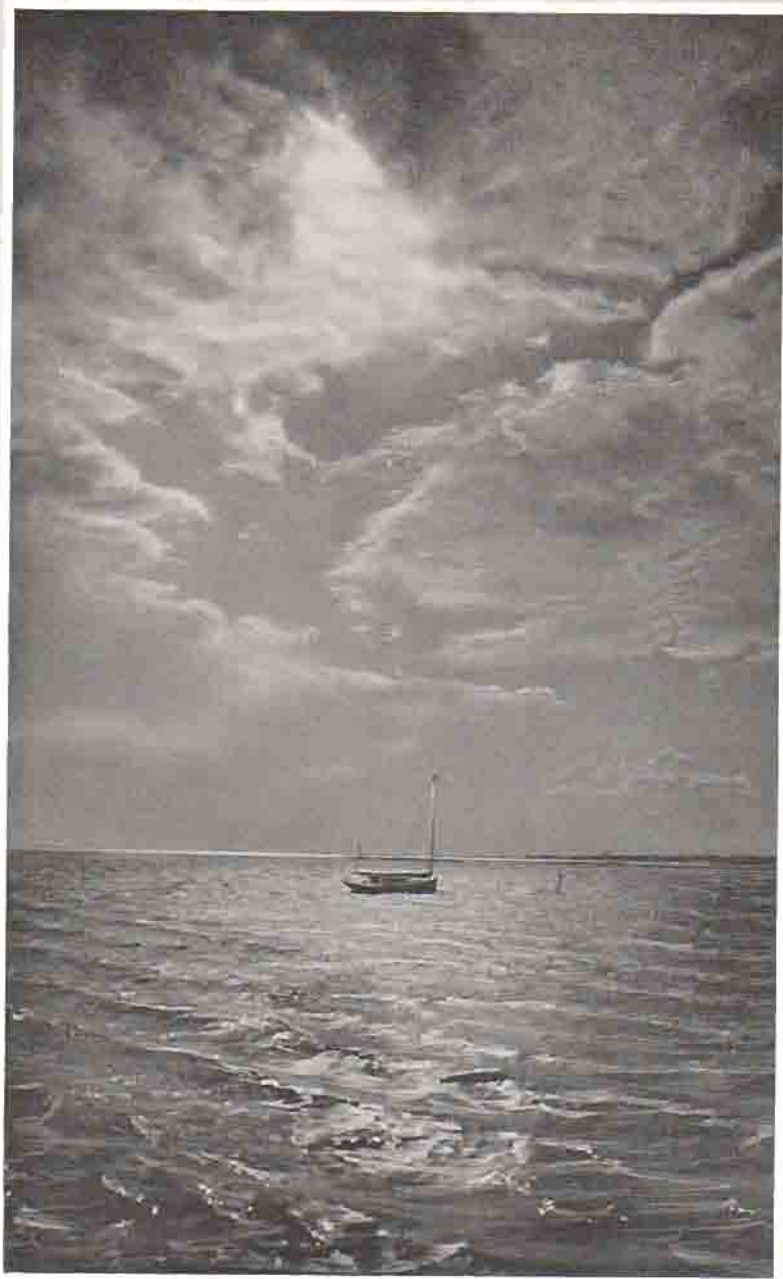
Long Island Railroad

All-Longdon
Travel Office

Howard H. Smith
Gen. Passenger Agent

Pennsylvania Station, New York City

Long
Island
Resorts



The Land of Pastimes



LONG ISLAND is the answer to that welcome and sometimes puzzling question, "Where shall we spend the summer?"—a question that awakens the interest and brightens the eyes of so many. It is the answer because it possesses all the characteristics that enter into making an ideal summer resort—a place to which one may take himself for rest, recuperation and recreation and find the fullest satisfaction.

*No greener valleys the sun invite,
On smoother beaches no sea-birds light,
No blue waves shatter to foam more white.*

—WHITTIER.

Long Island is a beautiful and picturesque stretch of land, 123 miles long from New York to Montauk Point, and from 15 to 25 miles wide—between Long Island Sound on the North and the Atlantic Ocean on the South. Nature could have formed no territory more ideal for a summer resort or permanent residence than Long Island.

Its popularity is rapidly increasing, and now the greater part of the westerly districts of the Island are included among the most attractive all-year-round suburban home communities of the great city of New York.

On the North Shore that borders the Sound, there is a range of rugged hills, broken by innumerable long, narrow bays—on the South or the Ocean side of the Island, the country is level and famed for its pic-



On the Ocean Beach

One of Long Island's
Good Roads on the
North Shore



turesque bays and its splendid beaches. The Central Section is a series of rolling valleys, dotted with pretty lakes and traversed by winding streams.

The opportunities for sport which Long Island presents are such as no other section of country anywhere near the great metropolis can offer. It has some of the most famous yachting harbors in the world. Its golf links rank with the best in America. Its good roads for automobiling and driving are widely known. Its beaches, miles and miles long, are probably equaled nowhere, which combine to make ideal conditions for the enjoyment of surf or still water bathing. To the fisherman and hunter it holds a horn of plenty. Its streams and lakes and woods furnish all the charm to be found in those resorts which lie inland. Its appeal to the sportsman and the lover of outdoor pastimes is irresistible.

Nowhere are there bays, and so many of them, equalling in beauty those indenting the shores of Long Island.

The Sound, Great South Bay, Shinnecock Bay, Peconic Bay, Gardiner's Bay, and the Atlantic Ocean offer a variety of sailing. To those whose timidity prevents their enjoyment of the Ocean and Sound, the Bays afford an opportunity to indulge to the fullest extent in the pleasures upon the water, which is a feature of Long Island summer life. On a summer day hundreds of yachts and sailboats may be counted skimming over the sparkling surface of the bays.

"The Automobilists' Paradise" was long ago applied to Long Island. Some twelve hundred miles of connected asphalt and macadam roads lead unbroken from the heart of the city by three or four different routes and continue over firm gravel and shell roads through the Island, extending over a hundred miles from the city. These roads offer an infinite variety of hill and vale, land vistas and water views, level stretches and forest-crowned slopes, with frequent garages for those supplies the modern vehicle must have.

Long Island has over Four Hundred miles of coast line, on Ocean, Sound and Bays, and is the only large section of the Atlantic Coast



Boating on
Great South Bay.

entirely surrounded by water, and receives all its beneficial influences, affecting the temperature, making it warmer in winter and cooler in summer.

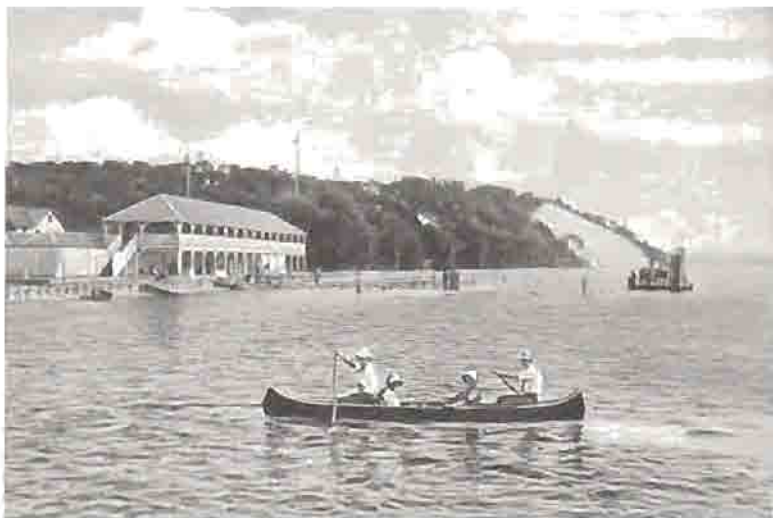
Its ocean coast line runs nearly east and west, and it is the only section of the United States whose ocean boundaries have this direction. The influence of this peculiarity upon its climate is very marked, as the prevailing winds, wafted over the ocean's surface in summer, are invariably from the south, sweeping across the Island to the Sound shore. To breathe the fresh salt air on Long Island is like a sea voyage—but without its discomforts.

A Pastoral Scene



Only those who have sweltered in the city and have then gone to one of the charming towns of the Island to find it so cool at night that a blanket "feels good" can realize the great, almost phenomenal difference in the temperature.

Physicians who make a careful study of climate and other conditions relating to the physical characteristics of places, have written articles with



Shelter Island Shore



Main Street.
Easthampton

Long Island Resorts



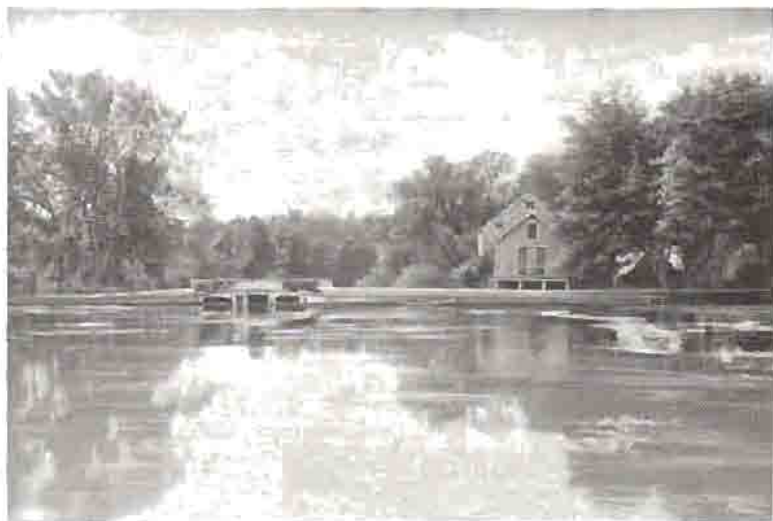
records, forcefully revealing the charming climate of Long Island. It is warmer in winter than Washington, and cooler in summer than in the northern part of the State. In addition to the salt tonic from the sea breezes, Long Island is blessed with an abundance of pure water from subterranean streams, there being a number of remarkable springs, streams and fresh water lakes throughout the Island. The natural drainage is as near perfect as can be found anywhere. Because of the character of the substrata of its soil—composed of sand, gravel and a thin stratum of clay—the water is pure, and is freer from organic and inorganic material than wells of other regions not having a sand and gravel soil.

In soil and climatic conditions it is admirably adapted to flower, vegetable and fruit culture. Thousands of its broad acres are being scientifically and intelligently tilled, and from this region there come to the market of the City of New York daily supplies of enormous volume and of the finest quality.

The Long Island Railroad Company's experimental farms at Wading River and Medford are simple clearings with a little well-digging, yet the richness and variety of the products, both flowers and vegetables, have surpassed all records.

In planning the summer outing, or seeking a permanent home, to the business man an important consideration is accessibility. It is in this respect that the charms and advantages of Long Island claim a peculiar recognition. To those whose time is all their own, distance is a secondary consideration, but it is the nearby resort that interests the great multitude, and for this

The Lake
at Oakdale



reason Long Island, New York's sea-coast, appeals unerringly to the city's busy workers.

The trains of the Long Island Railroad are run to the New Pennsylvania Station in New York City at Seventh Avenue and Thirty-second Street, landing passengers into *the very heart of the City*, from which any part of the town can be reached quickly by the transit facilities at hand. A circle with a three-quarter mile radius would include all the big restaurants, the majority of the hotels and theatres and all of the big up-town stores. Furthermore, this great gateway affords passengers a very convenient means of transportation from any point reached by the Pennsylvania Railroad and connections, to points on Long Island under protection of a roof from the time they enter the train until they reach their destination on Long Island.

Should your business be downtown New York or in Brooklyn, the trains to and from the Brooklyn station can be quickly reached by the Subway trains.

The excellence and growth of the passenger service of the Long Island Railroad are indicated by the fact that it carried 12,387,649 passengers in 1900, and 33,867,228 passengers in the year 1911, safely and promptly.

The proximity of the Island to New York City, its excellent transportation facilities, the high grade of its schools, which rank among the best in the State, the quality of its society—all unite in producing conditions which are most eagerly sought by those who wish to establish a home of their own outside of the limited confines of the city; and each year sees new and artistic homes erected for permanent residents.



The Sea Cliff Shore

The Island offers many opportunities for the manufacturer and the farmer. It has almost unlimited factory sites, with thousands of population providing every class of labor. Almost every town or village has its industry—some of these industries are world famous.

It goes without saying that Long Island is well supplied with various kinds of salt water food—fish, oysters, clams, crabs, scallops and lobsters. The Blue Points from Great South Bay, Robbin's Island oysters from Peconic Bay, and Little Neck clams are known all over the country.

In a general way these are the chief characteristics of the Island. Even one of the most exacting taste can find amid this most infinite variety of charming spots some place which shall possess the desired requisites of a satisfactory abiding place for the summer or all year round.

"LIVE ON LONG ISLAND"



The
Pennsylvania Station,
New York City

The North Shore

Long
Island
Resorts



NE of the choicest bits of "water-front" on the Atlantic Coast is that section of Long Island known as the North Shore. A rich diversity of bluff and woodland along the Sound receding into beautiful meadows and a fertile farming country, is broken by inlets and deep bays from the Sound, each a gem of beauty and the shelter for hundreds of yachts, both large and small. Pleasure and trading vessels are always passing, and the many boat races in sight of the shore add to the attractive view.

Woodside, Winfield and Elmhurst, an old settlement, and Corona, are thriving modern villages rapidly growing because of their accessibility.

Flushing is the largest and most important town on this branch of the railroad. It is a residence town *par excellence*, and there is a stability about the place which is typical of the substantial Long Island town. To the north of Flushing are College Point, Malba and Whitestone, all enjoying the water privileges.

Whitestone and Whitestone Landing (Beechhurst) are directly at the juncture of the East River and the Sound, with beautiful marine views and fine all-year-round residences.

Beyond Flushing are Murray Hill and Broadway, serving the out-

The Sound
at Beechhurst
near Whitestone





Cow Bay.
from Plandome

lying sections east of Flushing. The next station is Bayside, on Little Neck Bay, where the famous clams come from, with the Oakland Golf Club near by, and wide, shady streets of macadam leading past handsome homes and fine lawns to the water at a dozen points. At the head of the bay is Douglaston, and farther on the village of Little Neck, both with corresponding attractions, followed by Great Neck, occupying the entire bluff land lying between Little Neck Bay and Manhasset or Cow Bay. This location abounds in excellent roads running in every direction through a charming country.

We find the water again at Manhasset and Plandome, which lie along a steep hillside with the bay to the north, which situation alone bespeaks their beauties and facilities for entertaining those who sojourn here.

Now the railroad turns north along the shores of Manhasset Bay, and



The Bay at
Port Washington

Hempstead Harbor
from Sea Cliff



half-way up the next neck is Port Washington, a delightful village, well situated on the Bay, both for a permanent residence or a summer visit. The home of the Manhasset Bay Yacht Club is here.

Equally well located beyond on the Oyster Bay Branch of the railroad are East Williston and Roslyn, the latter place made famous as the home of the late William Cullen Bryant, and picturesquely situated at the head of Hempstead Harbor. Behind the village is one of the highest points on Long Island, from the summit of which a magnificent view is afforded for miles about.

Glen Head, to the north, is a desirable location, situated a short distance from the harbor, and is especially attractive for suburban homes. Near here is Glenwood on the shore of Hempstead Harbor.



Boating at Sea Cliff



On the Bay at
Glen Cove

Sea Cliff, beyond, is a resort which is growing rapidly in popularity among those acquainted with its advantages. It is a commanding point, standing like a sentinel against the sky, overlooking the sheltered bay, which is unequalled for its still-water bathing and boating. The beach at the foot of the towering cliffs is a sandy strip upon which are built the bath-houses of the hotels and cottages. The town is sheltered by a dense



The Hall, Glen Cove

Among the Hills
at Oyster Bay



grove which crowns the summit of the bluff, and all about are lawns and flowers surrounding the cottages, which are here in great numbers and are always in demand for summer residences, attracting the attention

The Shore Drive,
Oyster Bay



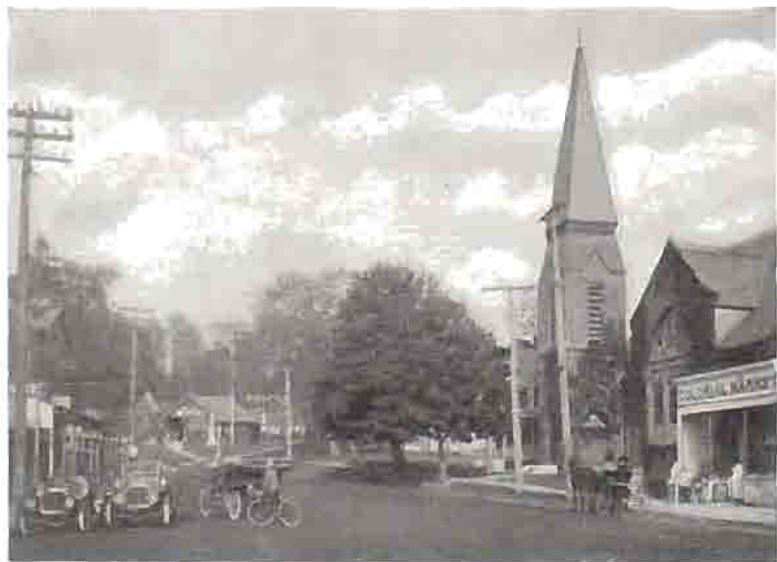
of people of culture and refinement. Many good hotels and boarding houses are located at Sea Cliff, which are easily reached by an electric car line which is operated between the village and the railroad station, connecting with all trains.

Turning eastward we reach Glen Cove, Glen Street station, with an electric car line from the station to the village, and also to Sea Cliff, and find an enterprising, progressive town with excellent stores, churches and



Views of
Cold Spring Harbor

Main Street
Huntington



schools. The Hall House and other boarding places afford accommodations to summer visitors.

Glen Cove provides handy station facilities for the many fine estates near by, and is the station for the famous Nassau Country Club, with its

The Bay
at Huntington





A bit of
Centreport

golf links. Glen Head, Sea Cliff, and Glen Cove are also reached by Steamboat from New York. The roads all about this section are excellent and furnish beautiful drives.

Locust Valley is a hill country overlooking the Sound, and rolling toward the Wheatley Hills, which mark the backbone of the Island to the south, crowned with palaces, threaded in all directions by good roads, mostly macadamized and splendidly graded, leading on through Mill Neck and Bayville, popular places that are attracting each year a large number of summer visitors, as they are near the water, and offer many diversions both on land and water.

Oyster Bay enjoys a location which makes it a favorite spot for pleasure craft of all kinds. It has a large number of splendid private residences, and the place is at once striking, quaint and antique. Hotels and boarding cottages offer accommodations to visitors. Here is the clubhouse and anchorage of the Seawanhaka Yacht Club, a noted organization of Corinthian yachtsmen. In fact, it may be said that the life on the North Shore centers about the water. All these places are within easy access of the city and combine the attractive features of water, steep hills, dense forests, and drives as picturesque as can be found anywhere. To fully appreciate this region one must travel along the woodland roads and from the hills and high bluffs view the bays, inlets and delightful vistas of blue waters. On each of the points which project into Long Island Sound are large estates of well-known people, notably those at Great Neck, Port Washington, Roslyn, Glen Cove, Locust Valley and Oyster Bay.

The Wading River Branch of the Long Island Railroad, which leaves the Main Line at Hicksville, runs through the picturesque wooded hills of the North Shore east of Oyster Bay.

Located on this division is Syosset, flanked by farms and orchards, beyond which lies Coldspring Harbor, with tree-arched roadway to the

Northport Harbor



Bay, and pretty lakes utilized by the State Fish Hatcheries for the propagation of the finny tribe.

Huntington is an important town, and one of the most popular of Long Island's resorts. Monuments commemorate Revolutionary characters and events, a memorial public library adds its educational effects to good schools, the permanent population is large, and the summer residents are increasing each year. There are comfortable hotels and many good boarding houses at Huntington, while the surroundings bear substantial evidence of thrift and progress.

Electric cars are operated from the station to the village and harbor, and also across the Island to Farmingdale and Amityville.

Greenlawn is a rural village and well situated for a summer stay. It is tucked away in one of the most picturesque parts of the hills near the bay. It is the railroad station for Centreport, a favorite section with the

Asharoken Beach,
Northport





The Sound at
Kings Park



The Lake.
Smithtown



The Bay at
St. James

Assembly Grounds
at Stony Brook



summer visitor, and delightfully situated on Centreport Harbor. Both the hunter and angler will find this an ideal and inviting spot. Several hotels and good boarding houses are here and the rates reasonable.

Northport, beyond, is beautifully situated upon the water. It has a fine harbor; and to-day it is an enterprising, active place of considerable commercial importance and growing rapidly as a town of summer and permanent residence. It has long been a popular summer resort, affording all features of outdoor summer life. An electric car line connects the town with the railroad station.

Kings Park, overlooking the Sound, is well located, with a climate ideal for health.

The Rassapeague and Wyandanch Clubs are located on the Nisse-

The Shore
at Stony Brook

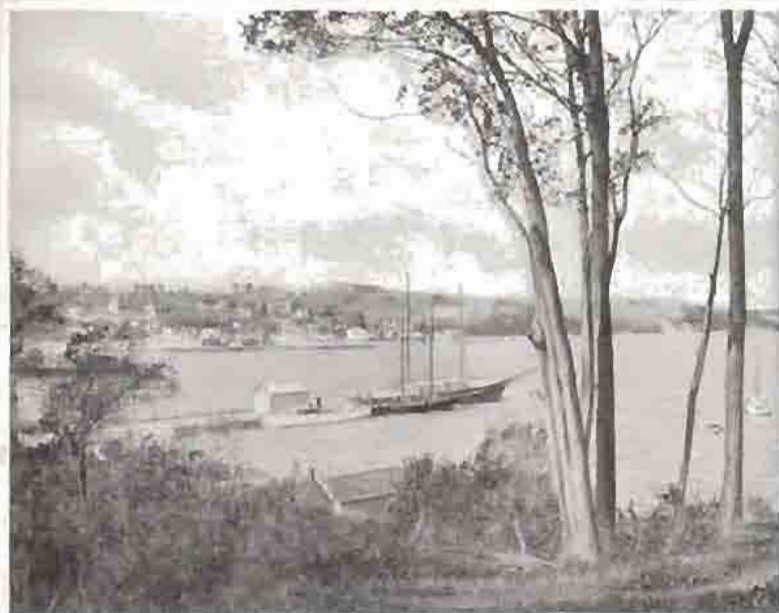




Old Field Point,
Setauket

quogue River at Smithtown, and the preserves of the Brooklyn Gun Club are close at hand. Smithtown Bay is the largest and most open of the many on this shore line, with little arms and connecting waters that reach out to surrounding villages. Of these St. James has one almost landlocked lake-like bay all to itself, surrounded by picturesque, enticing hills.

Stony Brook is the next place reached. For rural beauty, picturesque surroundings, and ample facilities for a summer's enjoyment, Stony Brook is unsurpassed. Situated on high, rolling land, it affords fine views of Long Island Sound. Here there is under development a restricted residential



Port Jefferson
Harbor

Belle Terre Club



community, the central feature of which is the Summer Assembly, conducted along the general lines of the work at Chautauqua, Ocean Grove, Winona and Northfield. Several conferences have been arranged for the coming summer season, at which some of the leading men in America will be heard.

Golf at
Belle Terre



Setauket is a succession of hills and dales, with beautiful drives on the shores of the Bay and through woodlands. It is a quiet, retiring place that has been sought out by vacationists for those very qualities. The Shore Acres Inn and other hotels and boarding houses furnish ample accommodations for the summer visitor. The Setauket Spring is located here, from which water is shipped to the city.

Port Jefferson, the next station beyond, is an important place, long known for its ship-yards. The crescent harbor of Port Jefferson is one of the safest on the Sound—its shores are delightfully attractive for bathing. The village has good hotels and boarding houses. A steamer plies between this place and Bridgeport, Conn., which is directly across Long Island Sound.

Close by lies Belle-Terre, an attractive high-class residence park, situated on high rolling ground, surrounded on three sides by water. It has a palatial clubhouse, yacht docks and harbor, miles of perfect drives, bridle paths, a garage, and many beautiful homes overlooking the water.

From Port Jefferson the railroad passes through the attractive rural villages of Millers Place, Rocky Point, and Shoreham to Wading River, the terminus of this branch of the railroad. At Shoreham a large cottage and bungalow settlement is located and is growing rapidly. This whole section is high and healthy, and affords an infinite variety of beautiful water views.



Cottages at Shoreham

The South Shore



One enjoys the sea with its surf bathing, sailing and deep-water fishing, the South Shore of Long Island, on the bay and ocean, will strongly appeal to him. The Great South Bay, the Mecca for lovers of aquatic sports, skirts the southern shore of Long Island for a distance of nearly eighty miles, and is an ideal and safe inland sea for sailing and still-water bathing.

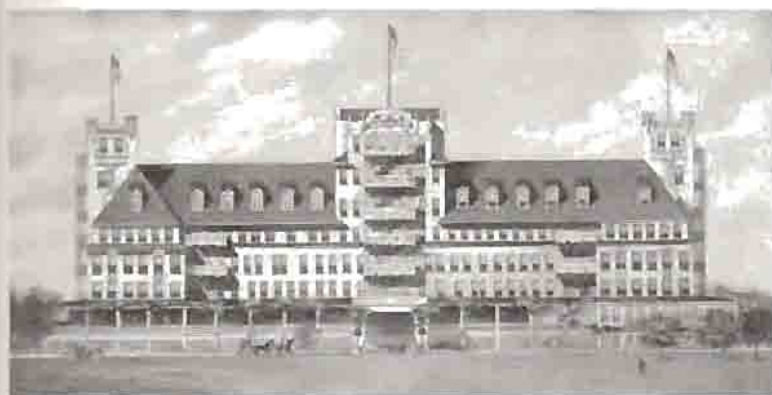
The nearest of all resorts to New York is the famous Manhattan

Oriental Hotel,
Manhattan Beach



Edgemere Club Hotel,
Edgemere





New Arverne Hotel

Beach, with its great Oriental Hotel. Manhattan Beach is being rapidly developed into a place of residence, a number of cottages having been built there.

Just back of Manhattan Beach lies Sheepshead Bay on the mainland, offering quieter delights, boating and fishing.

East of these lies Jamaica Bay, and following its coast line around, returning to the ocean at a point not far east of Manhattan Beach, is a long peninsula of sandy beach known as the Rockaways. On the westerly end lies Rockaway Beach, and beyond the settlements of Rockaway Park, Belle Harbor and Neponsit—very desirable places for summer or all-year-round residence.

Following the coast line to the east the next resort reached is Arverne, a modern summer-city-by-the-sea. Here is located the New Arverne and



Elstone Park Hotel,
Far Rockaway



The Main Street
and Beach
at Far Rockaway



many other good hotels and boarding cottages to care for the large summer population.

Edgemere is next, a delightful summer resort, with its magnificent Edgemere Club Hotel, one of the finest and most popular on the Atlantic Coast. It stands near the ocean and commands a charming view from its great verandas and rooms. There are many attractive cottages here.

Among the resorts which were popular a generation ago, and which have held their own in public esteem, must be counted Far Rockaway, which attracts each season an immense number of visitors, who find it one

of the most pleasing of Long Island's resorts. It is a town of beautiful cottages, has splendid educational facilities, and has amply demonstrated its attractiveness as a permanent residential section for both summer and winter. A number of good hotels and boarding houses are here.

Adjoining Far Rockaway is Lawrence, which the wealth of its residents has made "to blossom like a rose"—a fine, healthful location for permanent residence. Lawrence has an attractive clubhouse and palatial residences—its schools are also of the very best.

Further inland, on the broad neck of land which terminates in the



Views around
Woodmere and
Lawrence

Cottages at
Long Beach



Nassau Hotel,
Long Beach



Rockaways, are Cedarhurst, Woodmere and Hewlett, attractive towns amid surroundings of a pleasing rural nature. In every way that good taste can indicate, the best results have been attained in making these places attractive and beautiful. Their accessibility to the shores of the Atlantic Ocean, their proximity to the city and splendid train service, have a strong tendency to make this section one of the most charming places on Long Island for all-the-year-round residence—it is like a park in its artistic grouping of magnificent homes, for seemingly each resident has built not only for himself but with an eye to artistic relation to surroundings.

Valley Stream shows from the car window the usual features of a junction, but this busy corner is flanked by several groups of dwellings of different classes—the accessibility of the place and the character of the surrounding country having attracted many permanent residents. From this point there runs a branch line across the Island through Norwood,



The Boat Club,
Freeport

Lakeview, Hempstead Gardens, West Hempstead, and Garden City to Mineola, connecting there with the Main Line and the Oyster Bay Branch.

Following the shore line from Jamaica on the Montauk Division of the railroad, one will find a succession of pretty little towns, villages and resorts, which offer special advantages because of their proximity to the city, and at the same time there is about them the very decided charm which belongs to country life. Among these are St. Albans, a rapidly growing community,



Crystal Lake House,
Freeport

Massapequa Hotel.
Massapequa



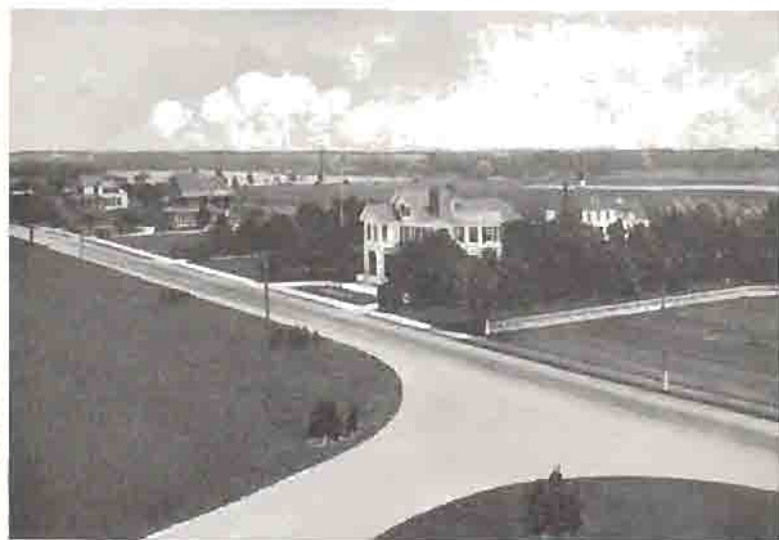
Springfield, an old-established town with fresh-water ponds and fine roads, Laurelton and Rosedale, in which homes are fast springing up.

Reaching Valley Stream again, this time from the west, we pass east to Lynbrook, the junction for the Long Beach Branch, a very progressive town and a place that has enjoyed remarkable growth in its population.

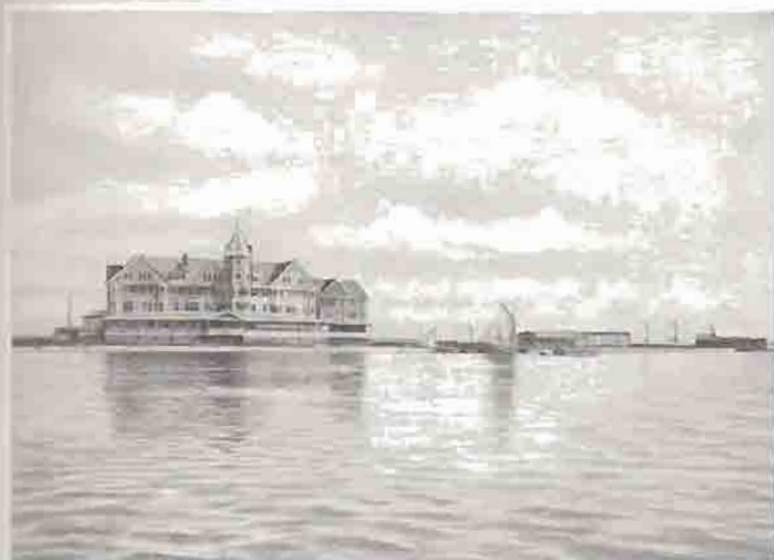
Beyond is East Rockaway, one of the quaintest towns of which the Island boasts, with many facilities for the enjoyment of life on the water.

Wreck Lead and Queenswater are places sought by fishermen and sailing parties.

Long Beach, where is located a large modern fireproof hotel of concrete and steel "The Nassau"—miles of boardwalk and a large number of



A View at
Massapequa



New Point Hotel,
Amityville

High-class cottages, is one of the ideal resorts around New York. Near the hotel is a casino, and a large bathing pavilion, which affords unexcelled facilities for bathing. The situation of Long Beach, with its broad ocean frontage, gives it exceptional advantages, and, as it is now planned, will be one of the most famous resorts on the Atlantic Coast.

Returning to Lynbrook and again starting east we pass through Rock-



Sport in the Ocean
at Muncie Island

The Dock
at Oak Island



ville Centre, a town of importance as a local trade center. It has many attractive homes and good schools, including a high school. Its splendid location and nearness to the city insured its rapid growth. Tributary to Rockville Centre and off the railroad is Oceanside, a delightful water-bordered colony of cottages.

Baldwin, just beyond Rockville Centre, is an inviting settlement in which prosperity is evident.

Freeport bears on its very face the always distinguishable marks of progress. It is a town of comfortable and attractive homes, well stocked stores, and inviting churches. It has good society, and is the home of many well-to-do people. Its gentle slope reaches to the Great South Bay, and from the ocean there is, during the summer season, an ever-refreshing and tonic-laden breeze. The Crystal Lake House and the Anchorage Hotel are located at Freeport.

Merrick closely adjoins Freeport on the east, and consists of many comfortable homes with pleasant surroundings.

Bellmore, Wantagh and Seaford lie to the east of Merrick, and in

Babylon





At Ocean Beach



The New Surf Hotel,
Ocean Beach



The Bay,
Point o' Woods



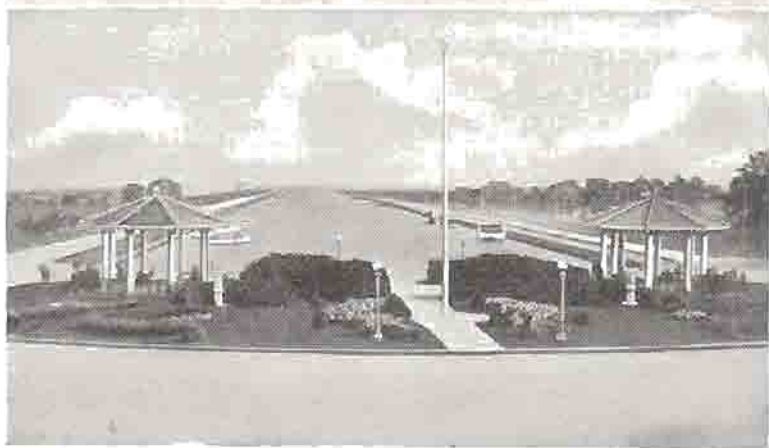
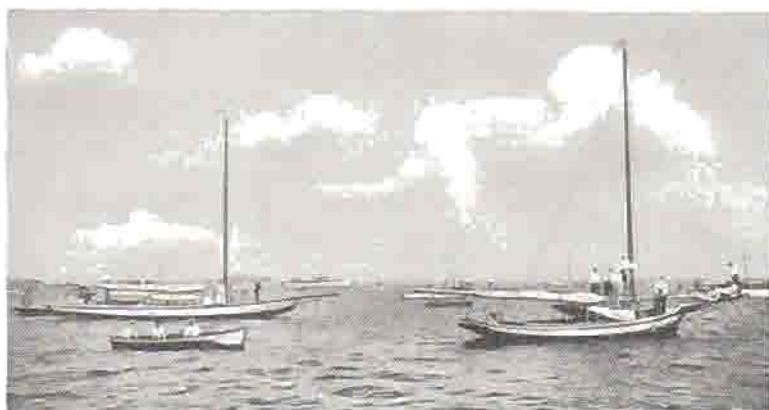
Bungalows at
Saltaire

each of these are attractive homes. They are near enough to Great South Bay to enjoy the cool breezes and are good places for all-year residence.

Massapequa has been the scene of recent rapid development, its inlet providing unusual facilities for private water frontage, attracting a superior class of home owners, who spend much of the year there. It has a summer hotel, the Massapequa, which offers all the advantages for entertainment that the presence of a well-managed house always brings.

Amityville is located directly on the open water of the Great South Bay, and for that reason is popular with all who love the water, yet seek the least travel to and from the city. The progressive spirit has invaded the place and provided it with many advantages—clubs, electric lights, schools and churches. It has several good hotels and boarding houses—

Boating on the Bay,
and the
Venetian Harbor,
at Brightwaters,
Bayshore





South Country Road,
Islip



South Side Sports-
men's Club, Oakdale

among them the Newpoint Hotel and Hathaway Inn. Electric cars are operated from Amityville to Farmingdale, and Huntington on the North Shore of the Island.

Views around
Sayville



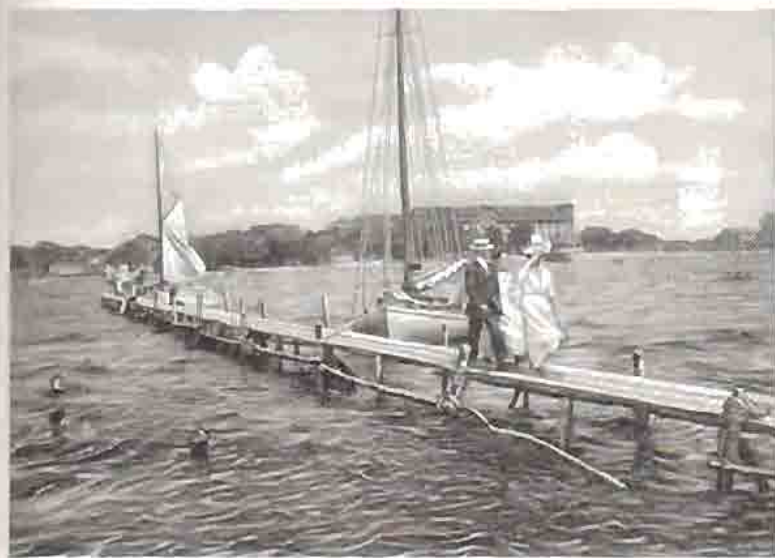
Following we find Copiague and Lindenhurst, growing communities, with plenty of room and delightful surroundings in which to grow.

Babylon is one of the largest towns on this division east of Jamaica, from which suburban expresses run that bring it almost as near the city in time as places much closer in miles. Its location on the Bay, its beautiful fresh water lakes, and wide shaded streets combine to make it one of the popular places of the Island, with substantial people and modern homes. From here lines of steamboats reach several beach resorts: Oak Island, where there are many cottages, and Muncie Island, with its hotel "Towanco Inn," are places to rest, loaf, boat, bathe and fish. Havemeyer's Point, and the clubhouses of the Short Beach and Wawayanda Clubs, the resorts of city men, where social advantages combine with natural attractions to make life joyful, are located in this vicinity.



Boating
at Blue Point

Bayshore, the next station beyond Babylon, with its fine churches, handsome residences, parked grounds, good schools and well-kept roads, is a suitable all-the-year-round town, to which the summer-cottage feature is but a pleasing addition. Some of the handsomest estates on Long Island are located at Bayshore. It is a town which, even the casual visitor may see, offers comfort and opportunities for a delightful existence. At Brightwaters, in Bayshore—a beautiful new residential section—many attractive cottages have been erected. There are good hotels at Bayshore, among them the Linwood and New Cortland—and many excellent homes for the accommodation of paying guests.



The Cliffton
Pierhouse

Wyandotte Hotel,
Bellport



Directly across the Bay is the far-famed Fire Island Beach, upon the end of which is the lighthouse known the maritime world over. Farther to the East, on the Great South Beach, a continuation of Fire Island Beach, are Point o' Woods, Ocean Beach, and Saltaire, conveniently reached by steamer from Bayshore, places which appeal to many people who desire to spend their summer by the sea in a quiet way. The Inn at Point o' Woods, the New Surf Hotel at Ocean Beach, and the Casino at Saltaire are good hostelrys in their respective localities. This Beach forms a natural breakwater for the South Shore of Long Island.

At Islip, with its pine forests and points of land stretching out into the waters of the bay, we find an especially invigorating atmosphere, beautiful homes, hotels, splendid drives, seemingly everything that heart could wish during the period of escape from the heated town. This part of Long Island which skirts the South Shore hereabouts is favored

An Ideal Road
through
Brookhaven





The Cove
at Moriches

with pine forests, which give the air a double charm, combining the odor of the balsam with the tonic of the sea.

At Great River we find many advantages of the towns last mentioned, with special facilities for small boating afforded by the arm of the bay. As you leave Great River you seem to enter open country with the finish and beauty of old England, which you discover to be a succession of great estates. The railroad station at Oakdale gives access to these parks and to the South Side Sportsmen's Club.

At Sayville we strike nearer the popular chord, with no lack of fine properties. The proximity of excellent bathing privileges and fine boating opportunities on the Great South Bay would alone account for its popularity, though these are not all of Sayville's attractions by any means. Sayville is provided with excellent hotels, among them the Elmore and Delavan, and good boarding houses, as well as schools and churches.

Bayport and Blue Point, with grand elms shading the village streets, sharing with Sayville the advantages of the excellent character of the nearby water, are in an open country where the sea breezes have more ready access, and extended views of meadow and bay charm the eye. The latter place is the home of the famous Blue Point oyster. Many good hotels and boarding cottages afford accommodations for the summer visitor.

Then comes Patchogue, one of the largest towns on Long Island. It is a flourishing city, "town" hardly fits, enjoying a sturdy, wholesome growth. It has wide brick-paved streets, large stores and office buildings, great lace factories, and comfortable hotels and boarding cottages. The best-known hotels here are The Clifton, Ocean Avenue Hotel, Laurel House, Patchogue Inn, and Roe's Hotel.

Hundreds of families consider Patchogue their summer home, and when the warm days come turn here without thought of any other place on earth.

The next town in this vicinity is Bellport, on the shore of the deepest part of the Great South Bay, provided with every accommodation for the

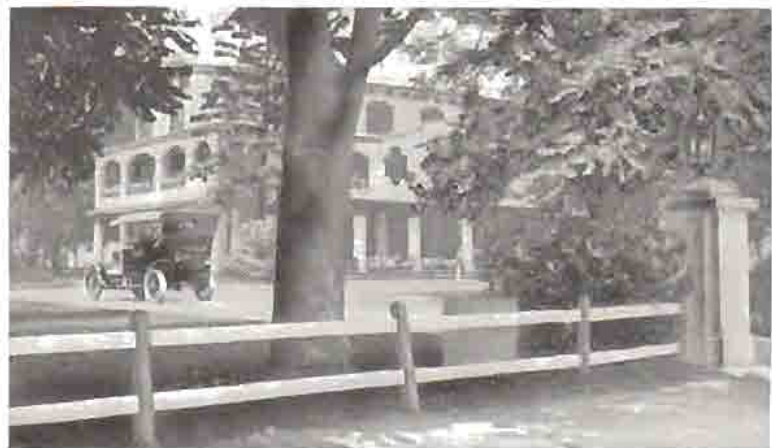
Cottages on the Ocean
Beach, Westhampton



The Hampton Inn,
Westhampton



The Howell House,
Westhampton



It has many charming homes and comfortable hotels. Similar in character and also providing good accommodations in several houses is *Stonhaven*, on a narrower part of the Bay.

Mastic is a quiet town of many rural attractions, surrounded by woodland. Three miles beyond lie the Moriches, consisting of three divisions, *Moriches*, *Centre Moriches*, and *East Moriches*, where fields and woodland patches surround delightful summer homes and farm boarding houses gathered near the bay shore, with the unusual attractions that are the ordinary thing along this matchless waterway. Hotels and boarding cottages supply social pastimes, and time never hangs heavy on the fortunate sojourners in the triple villages.

Eastport, located on higher ground, interspersed with lakes and streams, with many improved farms and rich, rolling country, offers beauti-

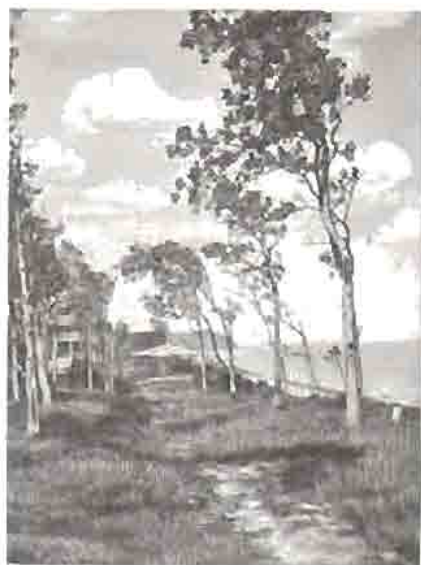


Bathing Beach.
Quogue



Quogue Field Club

Views at
Good Ground



ful views over the bay. The Long Island Country Club is located here at the edge of one of the several lakes which add to the beauty and variety of the country.

Speonk's cottages are always popular, their occupants forming a community of friendly interest that makes welcome for the stranger, who will find its delightful advantages worthy of investigation.

Westhampton is the first of the "Hamptons," and also the first point east of Long Beach where the ocean is reached without boats. Excellent hotels, wide-spreading private estates of great natural beauty, and near-by bays for boating, with fine golf links, add materially to its many diversions.

Quogue, always a popular summer resort with the best of accommodations, lies on the slopes rising toward the Shinnecock Hills, with ocean bathing at its doors, and extensive views of undulating country, wind-swept, with a spirit of freedom in the air that makes one instinctively desire to run over the springy grass of the moorlands.

Good Ground has a thoroughly descriptive name. It overlooks Shinnecock Bay, which bears the same relation to the surrounding country as



Meeting an Express
Train, Southampton



Cottages
on the Ocean Beach,
Southampton

Great South Bay, and duplicates its attractions. On the shore of Shinnecock Bay the Pon-Quogue Lighthouse shines for the mariner over twenty miles at sea. Hotels, boarding houses, and handsome private residences with spacious grounds are prettily grouped, and Tiana Bay, a beautiful smooth stretch branching off from the larger body, offers extra inducements to the pleasure seeker.

The principal hotels between Bellport and Good Ground are the Wyandott Hotel at Bellport, Moriches Inn at Centre Moriches, the Tuthill Point Hotel at East Moriches, the Hampton Inn and the Howell House at Westhampton, the Quogue and Post Houses at Quogue, the Ocean

Maidstone Club,
Easthampton



Maidstone Inn,
Easthampton



View House and Hotel Grening at Good Ground—all popular hostelries in the summer.

Shinnecock Hills was selected by the National Golf Association for its official course, a step that was not taken without consideration of every available spot; and a magnificent clubhouse has been built here for the accommodation of its members. Its desirability as a residential resort is amply proven by this choice. To the south lies Shinnecock Bay, which here almost blends with the ocean, except to the sharpest eye, and to the north extend the rippling waters of Peconic Bay; the two are connected by a canal



The Main Street.
Amagansett

originally built by the Indians two hundred years ago, and subsequently rebuilt by the State of New York.

Society likes Southampton, and Southampton shows it. It is an ancient town for America, dating from 1640, and showing several specimens of the early dwellers' architecture. Grouped around Agawan Lake, only a few hundred feet from the ocean, which sparkles like the gem in its emerald setting, are the villas of men and women who have attained distinction among mankind, and with it a goodly share of earth's contributions to those who serve her well.

Watermill is beyond Southampton, and is a delightful place, situated close to an arm of Mecox Bay, and offers many inducements to the summer home-seeker and artist. A body of fresh water, Nowedonah Lake, adds much to the pleasure of visitors to Watermill.

Bridgehampton, a charming old town with wide, shaded streets, is a community of workers, tilling the land and fishing the seas for a livelihood, with a cordial welcome for the summer visitor, where good accommodations may be had.

From Bridgehampton the railroad runs to Sag Harbor. Sag Harbor is an old whaling town, with a quaintness all its own. Excellent schools, industries, clubs, beautiful streets, and the bay, all combine to make it pleasant; busy, not rushing; quiet, but not sleepy. The Sea View House, at Noyack Road, near Sag Harbor, is a very good hotel and well located. Other hotels and boarding houses afford accommodations to the summer visitor. Express trains to New York are supplemented by the Montauk Steamboat Company's service to New York, and to New London, Conn., via Shelter Island and Greenport, bringing Boston and New England points in easy reach.

From Bridgehampton the railroad also extends to Montauk through Wainscott, Easthampton and Amagansett. Wainscott always has a corner of its eye on the sea for a possible whale, which still sometimes appears.

Wainscott Pond and Georgica Lake, separated from the ocean by a half-mile strip of sand not wide enough for starting a sprint race, are fresh water and lend novel situations for pleasant occupations and pastimes.

Easthampton, notwithstanding it being a historic old place, bears all the signs of a vigorous youth in old age, and is a delightful home town of a refined society, and offers many pleasures for the summer resident. Its main streets are bordered with fine trees, which suggest the oldest of the New England villages. Many of the residences here are as elaborate

Montauk Point
and Lighthouse



and costly as those at Southampton, and there is a quaint attractiveness and sense of stability about the life which marks it as one of the best of Long Island's resorts. The Maidstone Clubhouse affords a round of pleasure to the aristocratic summer colony.


Amagansett simply extends the facilities of this beach-bordered section for caring for those who would stay and absorb its beauties.

The Maidstone Inn and Osborne House at Easthampton, and the Sea View House at Amagansett, are good hotels in their respective localities.

Then follows a territory reminiscent of the Shinnecock Hills, but wooded in places and dotted with lakes, ending at Montauk Point, with the terminus near Fort Pond Bay, beyond which are the lighthouse-crowned bluffs of the extreme southeasterly point of the Island, Montauk Point.

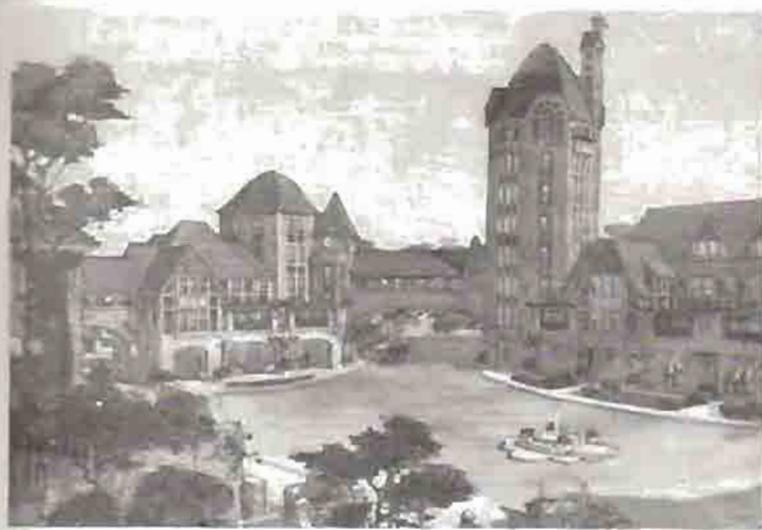
The Montauk Inn is delightfully located on a hill, and from its porches charming views may be had of the ocean and bay. The Parsons House is also well located and furnishes ample accommodations for guests.

Central Section of Peconic Bay Resorts ❀

 PASSING through the group of towns near the city, the first suburban settlement encountered is Forest Hills, where a number of beautiful homes have been built. The Forest Hills Inn, a new hotel, built by the Sage Foundation Homes Company, adjoins the station and affords excellent accommodations for those who wish to be near the city, and at the same time enjoy the benefits of the country. The next station beyond is Kew, from which trains run direct to the Pennsylvania Station, serving the North or Hill Section of Richmond Hill—one of the prettiest and most delightful suburban homesites around Greater New York. Adjoining on the south, really part of it, is Morris Park, developed by the service of the railroad across running through Brooklyn to downtown New York.

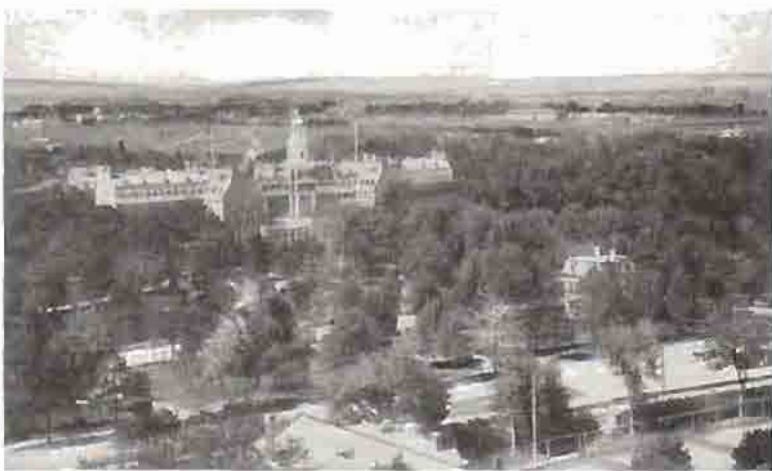
Jamaica is a little city and is peopled under much the same conditions as Richmond Hill. But it is the center of the railroad system, and has become a thriving business town, and the home of many of New York's business men. From Jamaica the Main Line of the railroad runs through the central portion of the Island, and then along the North Shore at the east end to Greenport.

Starting east from Jamaica, we first reach Hollis, built on the southerly slope of the "backbone of the Island," a healthy normal suburban town, convenient and delightful, with good educational facilities.



Forest Hills Inn,
Forest Hills Gardens

Garden City Hotel



Queens is a sheltered village of distinctively Long Island type, roomy, homelike; with beautiful roads in all directions, naturally the home of many business men.

Floral Park, a place utilized for the culture of flowers, is also developing into an ideal suburban residence section because of its proximity to the city and its excellent transportation facilities.

From this point the road leads to Garden City, well known as the See City of the Diocese of Long Island. It was founded by the late A. T. Stewart. Travelers from afar go to Garden City to see the beautiful Cathedral. Schools of the highest standing for boys and girls are located here—St. Paul's for boys, and St. Mary's for girls. Here A. T. Stewart planned a religious and educational movement which did not end with his death, and the town is the center of a refined and cultured circle. The Garden City Hotel, without exception, is one of the most accessible and best appointed hotels near New York City. In the western part of Garden City is Nassau Boulevard, a new residence section, in which there are many beautiful homes.

There are pleasant drives through the charming country around Hempstead and Westbury. The queenly beauty of old Hempstead, with its Revolutionary associations and relics, its beautiful homes and spacious, quiet streets, good schools, and churches, its perfect modern improvements, and delightful social atmosphere, bring hundreds of families under its charm, both summer and winter.

Beyond Floral Park, on the Main Line, lies New Hyde Park, bordering the Hempstead Plains, with fine farming country through which splendid macadam roads are found. Still farther on is the county seat of Nassau, Mineola, a growing community where is located the Fair Grounds



The Main Street,
Hicksville

of the Queens-Nassau Agricultural Society. At these fairs there is always a fine show of land products and fine horses and other stock.

Westbury is the center of beautiful estates where many prominent people have located, with ideal roads for motoring and driving. The society is of the best, and many palatial estates have been built here by well-known New Yorkers, whose meets and hunts are celebrated among the gentlemen sportsmen of the world.

Near here the new Motor Parkway is located, where the Vanderbilt Cup motor-car races are held.

Hicksville, where the Wading River line branches off, has felt the spirit of change and improvement. There is a thriving aspect about the town, and one has a feeling of solid comfort in looking down the shady vista of its wide, clean, main street.

We find the same sweet air, fertile fields, and quiet home life in Central Park, where the fragrance of young pine-trees is wafted over the beautiful level roads, one of which leads to Farmingdale, a progressive village that offers delightful entertainment in the days of summer idleness, with the high "backbone" hills near at hand, and beautiful macadamized highways winding in all directions. Churches, public schools, a school of technology, back-yards, and factories attest its enterprise. From Farmingdale an electric car line runs to Amityville on the south side of the Island, and to Huntington on the north side.

Pinelawn is the next town amid these pleasant surroundings—to the East is Wyandanch, where the Commack Hills appear, altering the character of the country with more and larger trees and medicinal springs.

The desirability of Deer Park is shown by the many new buildings finished and under way, occupants being not hard to find.

The Health Resort,
Brentwood



Brentwood lands us in a pine belt that gives an especial healthfulness to the sea air which is never lacking in all parts of the Island. Because of the favorable climatic conditions in this section of the Island, Dr. W. H. Ross established here a health resort. The Sisters of St. Joseph have here located a justly celebrated school for young ladies.

Central Islip is also in the pine belt. The healthful conditions, pure air and good water, in the midst of a great pine belt, make this district a most favorable place for residence.

Ronkonkoma lies just south of the lake of that name, which is one of the beauty spots of the Island. This lake is one of nature's surprises—it is the largest body of fresh water on Long Island—and is fifty-five feet above sea level. The lake has its periods of ebb and flood, but these are in no way connected with the tides on either side of the Island. Several hotels and boarding houses offer good accommodations.

Holtsville is in the midst of farm and wood lands, and here is located the Waverly Gun Club. Among wide stretches of plain and forest beyond is Medford, where any one longing for "a lodge in some vast wilderness" can find it close at hand. The same picturesque patches of woods, alternating with open country, extend to and surround Yaphank, lending a charm as unique in its way as the odd name it bears.

At Manorville, the Peconic River flows nearby on its eastward course toward Great Peconic Bay. This is the eastern connecting point of the Main line and Montauk Divisions of the Long Island Railroad.

Calverton is noted for exceptionally fine farm products, and is the beginning of a section where cranberries have been found to reach their highest perfection.

Many of these villages lie in a vast expanse of pine forests, somewhat resembling those in the lakewood region, where the air is sweet from the fragrance of the pines.

Continuing on the Main Line of the railroad we come to Riverhead, one of the largest towns on Long Island, the County Seat of Suffolk



Camping on the Shore,
Lake Ronkonkoma

County, on the Peconic River, which runs into Peconic Bay. It is the business center of that attractive country, and popular with many as a place of summer residence. It has its own rural resort for boating, shooting and fishing, with kindred sports at Flanders, about two miles out of the village, and easily reached.

Aquebogue supplies further opportunity for the enjoyment of the simple life of the farm, but with the advantages of Riverhead close at hand.

Jamesport is on the Peconic Bay, adding to the Island's wealth of opportunities for water sports, the more rolling land giving elevated sites for its homelike houses, good hotels, and restful cottages, making it a very popular resort. The Miamogue House and Great Peconic Bay House are located at Jamesport.

Laurel and Mattituck, with Cutchogue, and its neighbor New Suffolk, lie along the North Fluke of the Island, upon which we are entering, with the Sound and Peconic Bay both in easy reach, and offer well-prepared accommodations in an ideal country. Peconic Bay, with its wooded shores and gentle hills sloping back from the water, is more like a Maine lake than a body of salt water, and forms one of the most distinctive of all Long Island's aquatic features.

Peconic, with its broad, shaded streets, makes a favorable impression at once. Good boarding houses abound besides excellent facilities for boating and other outdoor sports.

Southold is a larger town and vies with Southampton, across the Bay, as to age, claiming settlement in 1640. The cottages of its rapidly growing summer colony line the shores of both the bay and Long Island Sound, which here takes on much of the picturesqueness of the Maine Coast. Several good boarding houses and comfortable hotels are located

The Park
at Riverhead



Great Peconic Bay
at Jamesport



here, prominent among which are the Paumonok Inn and Southold Hotel. Its dwellings have extended widely beyond the original group of old houses, schools, stores and churches.

Four miles farther on comes Greenport, the end of this division of the Long Island Railroad, giving access to Shelter Island and many points of noted beauty immediately beyond, including East Marion, Orient and Orient Point, where many a summer pilgrimage ends in rest and recreation.

Greenport itself is an embowered village of nestling houses and hotels, with boarding for summer visitors at every turn. It is the gathering place of yachting cruises because of Greenport's facilities for supplies and the delights of Shelter Island across the Harbor, reached by ferry.

From Greenport the Montauk Steamboat Company's steamers make their rounds from Sag Harbor on the south to New London on the north.



The Bay
at Mattituck

across the Sound, passing the chain of islands that stretch out beyond Orient Point as if only just separated from the mainland by some great inundation, the receding waters of which might give pathway by land to the New England shore.

Finating on the landlocked waters between Gardiner's Bay and Peconic Bay, opposite Greenport, is Shelter Island, one of the best-known watering places on the Atlantic Coast. Indians knew it as the "Island sheltered by Islands," but the Quakers gave it its name because there they found shelter from their persecutors. As a resort, Shelter Island offers all the beauties of nature, coupled with every modern convenience. It affords excellent bathing, sailing and attractive natural scenery. The Prospect House, located here, is one of the best-known hotels in the East, and has a frontage of several hundred feet along the Bay, and a more charming situation cannot be imagined. At Manhasset and Shelter Island Heights, interspersed among the wooded hills overlooking the bay, are the summer homes of many well-known people. Many good boarding houses are located on Shelter Island. Shelter Island's location is particularly desirable on account of its facilities to reach, by steamers of the Montauk Steamboat Company, adjacent places—New London, Conn., Sag Harbor, L. I., and Block Island, R. I. At New London connections are made for all New England points. A short ferry conveys passengers between Greenport and Shelter Island.

Fast trains direct from New York make Shelter Island accessible, and for those not hurried the Montauk Steamboat Company's line from New York provides a very delightful trip through the whole length of the peerless Sound, as mentioned before.

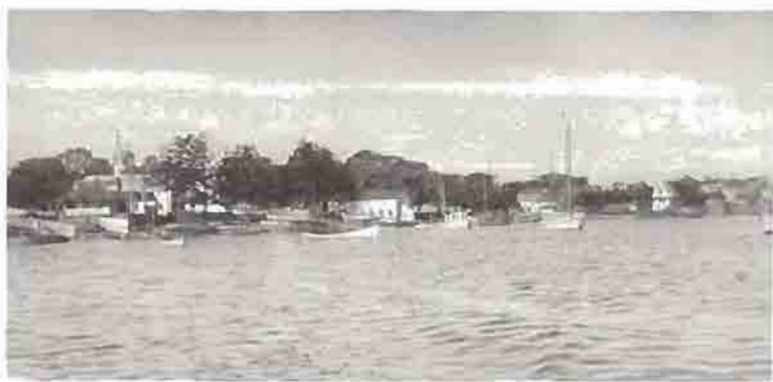
Incidental mention has been made of opportunities on Long Island for the golfer. The accessibility of many of the courses from New York makes

On the Shore at
Southold



them especially attractive. There are within easy reach of the metropolis fully a dozen courses, each of which has its special merits, and some of which are virtually unsurpassed outside of Scotland. The Flushing Country Club is located at Flushing. At Bayside, near Flushing, is situated the course of the Oakland Golf Club, which had an almost national reputation as the home club for several years of the Amateur Champions of the United States. At Port Washington is located the Sands Point Golf Club. Garden City is favored with two popular golf courses. The course of the Garden City Golf Club ranks among the first in the United States. It is intelligently planned, and is maintained in the very best manner. It is patronized by players of known skill. Matches are frequently played here that are well worth the observation of any one, whether he be an adept or

The Bay
at Greenport





Deerings Harbor,
Shelter Island,
Prospect House
in distance

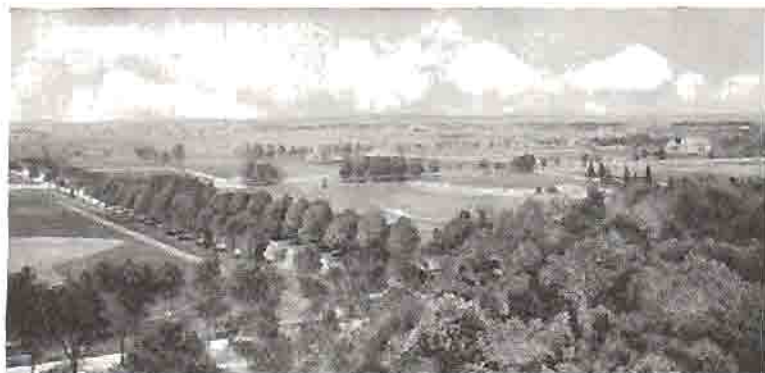
an amateur. The new and sporty Salisbury links here are admirably located, and are open to all golfers, with a high-class clubhouse, with baths and all the necessary conveniences, and café. The peculiarity of the soil at Garden City is such that it is possible to enjoy this sport throughout the year.

On the Oyster Bay Branch of the railroad at Glen Cove the links of the Nassau Country Club have been laid out to offer golf of high quality to skilled players, and the club also makes a special feature of the play for its women members, so that the summer colony living near by is largely recruited from women who have taken up the game. There is also a golf course at Sea Cliff.

The Ocean Country Club at Far Rockaway, the Inwood Country Club at Inwood, and the Rockaway Hunting Club at Cedarhurst, on the Far Rockaway Branch, have fine golf courses. At Great River the course of the Westbrook Club is also of particular merit, and the play on it is usually of a high quality, making it worth the attention of all visitors who are interested in golf. All of the larger shore towns have their golf clubs: Massapequa, Bayshore, Sayville, Bellport, Westhampton, Quogue and Bridgehampton.

At Shinnecock Hills is one of the first courses established in this country. It is situated on the true links—along the rolling hills near the sea and bay. The club maintains a course for women as well as for men. The men's course is frequently the scene of national championship matches. Golf has long been one of the chief features in the life of the summer at the east end of Long Island. Other courses on the east end of Long Island are those of the Wainscott Golf Club at Wainscott, the Maidston:

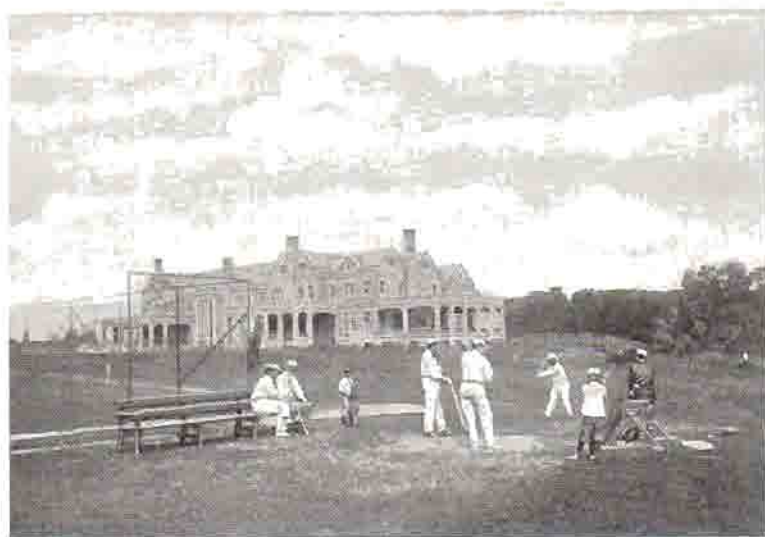
Garden City
Golf Course



The Salisbury
Golf Links,
Garden City



Nassau Country Club,
Glen Cove





Shinnecock Hills
Golf Club

Clubs at Easthampton, the Manhasset Golf Club and the Shelter Island Country Club on Shelter Island.

In the interior section, from thirty to seventy miles from New York, there is much good land which has never been tilled; except for the small villages and occasional farms, it is mostly covered with pine and oak trees of small growth, the trees having been cut off as soon as they reached merchantable size.

The names and addresses of houses where every grade of accommodation may be obtained at all points on the Island are given in the following pages. By notifying all known resorts we endeavor to have this list as complete as possible, but experience shows that many neglect the opportunity to be scheduled until after this annual goes to press, so the list by no means expresses the limit of Long Island's ability to take care of those who seek her advantages.

Resorts on the North Shore

<i>Flushing.</i> (<i>Bridge St.</i>) N. Y.	9.8 MILES FROM NEW YORK	23 Trains on Week Days	18 Trains on Sundays
	NAME OF HOUSE OR HOTEL	PROPRIETOR	TERMS PER WEEK
	Fountain House	Jacob F. Hanbell	Apply
			12
			Near
<i>College Point.</i> N. Y.	11.2 MILES FROM NEW YORK	23 Trains on Week Days	18 Trains on Sundays
	Boarding House	Mrs. Chas. Palmer	\$8.00 to \$12.00
			20
			14
<i>Whitestone.</i> N. Y.	12.9 MILES FROM NEW YORK	23 Trains on Week Days	18 Trains on Sundays
	Hotel	Adam Knab	\$10.00
	Boarding House	Mrs. H. DeWitt Smith	Apply
	White Rock Lake Hotel	David S. Mold	\$10.00 up
	Private Residence	Mrs. Lizzette Wood	\$8.00
			6
			Near
<i>Whitestone</i> <i>Landing.</i> N. Y.	13.7 MILES FROM NEW YORK	24 Trains on Week Days	18 Trains on Sundays
	Private Residence	M. F. Noiram	\$15.00
			30
			Near
<i>Murray Hill.</i> N. Y.	10.6 MILES FROM NEW YORK	23 Trains on Week Days	16 Trains on Sundays
	Hotel	Chas. G. Rieger	\$10.00 to \$12.00
	Private Residence	Mrs. W. T. Rley	Apply
			15
			Near
<i>Bayside.</i> N. Y.	12.9 MILES FROM NEW YORK	23 Trains on Week Days	16 Trains on Sundays
	Private Residence	C. E. Arrindell	Apply
	Private Residence	Mrs. Claude Vermilye	\$8.00 to \$10.00
	Boarding House	Sara W. Van Nostrand	\$9.00 to \$15.00
	Private Residence	Mrs. W. B. Smith	\$8.00
	Boarding House	Mrs. John Reid	\$7.00 to \$10.00
			25
			Near
<i>Douglaston.</i> N. Y.	14.2 MILES FROM NEW YORK	24 Trains on Week Days	16 Trains on Sundays
	Additional Train on Saturdays		
	Hotel	J. E. Tench	\$17.50
	Knollwood Cottage	R. E. Buffington	Apply
			10
			14
<i>Great Neck.</i> N. Y.	16 MILES FROM NEW YORK	23 Trains on Week Days	16 Trains on Sundays
	Additional Trains on Saturdays	Also Steamboat service between New York and Great Neck.	
	Shore Cottage	Mrs. J. Schmidt	\$10.00 to \$12.00
	Cove Cottage	Mrs. Cora G. Ellard	\$10.00 to \$15.00
			10
			24
<i>Port Washington.</i> N. Y.	20.2 MILES FROM NEW YORK	25 Trains on Week Days	16 Trains on Sundays
	Additional Trains on Saturdays		
	Hotel	C. C. Thatcher	Apply
	Boarding House	Mrs. I. Lake	Apply
	Hotel	John F. Bradley	\$14.00 up
	Sansepar Hotel	Mrs. W. E. Seaman	\$8.00 to \$12.00
	The Anchorage	A. R. Haskell	\$10.00 up
	Old Heidelberg	John Konrad	\$10.00 to \$12.00
			40
			Near
<i>East Williston.</i> N. Y.	21.5 MILES FROM NEW YORK	13 Trains on Week Days	7 Trains on Sundays
	Additional Train on Saturdays		
	Hotel	I. W. Bell	Apply
			10
			Near

34.2 MILES FROM NEW YORK

15 Trains on Week Days

8 Trains on Sundays

*Roslyn,
N. Y.*

Additional Trains on Saturdays

NAME OF HOUSE OR HOTEL	PROPRIETOR	TERMS PER WEEK	NUMBER ACCOMMODATED	MILES FROM STATION
Arlington Inn	G. H. Dini	\$9.00 to \$12.00	25	1
Thomas House	Peter Lynch, Jr.	\$8.00 to \$15.00	20	1
Shed	Oscar Seaman	\$9.00 to \$14.00	—	1 1/2

37.2 MILES FROM NEW YORK

14 Trains on Week Days

8 Trains on Sundays

*Glenhead,
N. Y.*

Additional Trains on Saturdays. Also Steamboat service between New York and Glenwood Landg.

Residence	Martin Karatonyi	Apply	100	1
Private Residence	Miss A. Manahan	\$8.00	20	1 1/2
House	Mrs. F. Hahn	\$8.00	15	1

* P. O. Address, Glenwood Landing, N. Y.

38.7 MILES FROM NEW YORK

15 Trains on Week Days

8 Trains on Sundays

*Sea Cliff,
N. Y.*

Additional Trains on Saturdays. Also daily Steamboat service between New York and Sea Cliff.

Electric cars are operated between Sea Cliff Village and Sea Cliff railroad station, and between Sea Cliff and Glen Cove, Glen St. stations. Fare, five cents.

Seaside Inn	Mrs. J. M. Gillan	Apply	60	Near
Sea Cliff Hotel	Manager	Apply	225	1
Plum Park Hotel	Mrs. J. Stierheim	\$12.00 up	130	1
The Kenwood	M. Johnston	\$10.00 up	80	1 1/4
The Linwood	Mrs. C. Dewd	\$8.00 to \$12.00	30	1
Seaside Cottage	Mrs. W. B. Scott	\$8.00	16	1
Lawrence Cottage	Mrs. A. Lawrence	\$8.00 to \$9.00	14	1
Kanawha Cottage	L. Eschew	\$8.00 up	30	1 1/2
Grand Pinnacle	F. G. Kent	\$10.00 up	100	1
The Glenada	Mrs. C. E. Huyck	\$9.00 to \$12.00	75	Near
The Monterey	Mrs. E. J. McCormack	\$10.00 to \$15.00	30	1 1/4
Walsh House	Julia A. Walsh	\$10.00 to \$15.00	20	1
Seaside View Hotel	L. M. Young	\$12.00 to \$15.00	100	1
Seaside Cottages	Mrs. Agnew	\$12.00	50	1
Seaside Cottage	L. E. Bliss	\$9.00 to \$12.00	55	1
The Prospect	J. H. Blum	Apply	50	Near

39.7 MILES FROM NEW YORK

15 Trains on Week Days

8 Trains on Sundays

*Glen Cove,
(Glen St.)
N. Y.*

Additional Trains on Saturdays. Also daily Steamboat service between New York and Glen Cove.

Electric cars are operated between Glen Cove Village and Glen Cove, Glen St. railroad station, and between Glen Cove, Glen St., and Sea Cliff stations. Fare, five cents.

The Hall	Gillan & Edwards	\$21.00 up	150	2
Seaside House	Mrs. W. Noderfer	\$7.00	11	1 1/2
Seaside Hotel	Joseph Roll, Jr.	Apply	60	1 1/4
Seaside Hall	Mrs. J. Hendrickson	\$8.00 to \$12.00	15	1

Reached by stage from Locust Valley or Oyster Bay railroad stations.

Arlington Hotel	Robert A. Beshlian	\$10.00 to \$15.00	75	3 1/2
Seaside View House	Mrs. Jacob Temple	Apply	12-15	3
Seaside House	Mrs. A. V. Torbet	\$8.00 to \$10.00	10	3
Seaside House	Julia Ergenzinger	\$8.00	20	3
Seaside House	B. A. Verity	\$7.00 to \$10.00	10	3
Seaside Cottage	Mrs. Wm. Brown	\$7.00 up	10	3
Hotel	Louis Hoffman	\$10.00 to \$15.00	20	3

*Bayville,
N. Y.*

40 MILES FROM NEW YORK

15 Trains on Week Days

8 Trains on Sundays

*Oyster Bay,
N. Y.*

Additional Trains on Saturdays

Private Residence	Mrs. James Thompson	\$8.00 to \$12.00	20	Near
Seaside Hotel	John H. McKenney	Apply	—	Near

41.1 MILES FROM NEW YORK

10 Trains on Week Days

5 Trains on Sundays

*Syosset,
N. Y.*

Hotel	Henry Lang	Apply	11	Near
-------	------------	-------	----	------

44 MILES FROM NEW YORK

11 Trains on Week Days

5 Trains on Sundays

*Cold Spring
Harbor,
N. Y.*

Additional Trains on Saturdays

Hutchinson House	Mrs. E. W. Mitchell	\$10.00 to \$12.00	30	3
"The Vineyard"	Wm. J. Smith	\$7.00	30	2 1/2

**Huntington,
N. Y.**

36.7 MILES FROM NEW YORK

12 Trains on Week Days

5 Trains on Sundays

Additional Trains on Saturdays. Electric cars are operated between Huntington Village and Huntington railroad station, Farmingdale, Melville and Amityville.

NAME OF HOUSE OR HOTEL	PROPRIETOR	TERMS PER WEEK	NUMBER ACCOMMODATED	MILES FROM STATION
Hotel	W. R. Selbeck	\$10.00 to \$15.00	80	3
Private Residence	Mrs. J. E. Gildersleeve	\$8.00	12	1 1/2
Private Residence	Mrs. S. D. Cameron	\$7.00	12	3/4
Clune House	Mrs. D. Clune	\$7.00	14	1
Private Residence	Mrs. George A. Conklin	\$7.00	8	Near
Hotel	Geo. Gough	\$9.00	15	Near
Fairground Cottage	Mrs. C. Magrane	\$7.00	22	3/4
Arbor Cottage	Edith E. Tarr	\$8.00	10	3
Private Residence	M. L. Printess	\$7.00	6	1
Private Residence	John Hassett	\$7.00	12	1

* P. O. Address, Fair Ground, N. Y.

**Greenlawn,
N. Y.**

39.3 MILES FROM NEW YORK

12 Trains on Week Days

5 Trains on Sundays

Additional Trains on Saturdays.

Hotel	Archie Hall	Apply	20	1 1/4
Farm House	Mrs. B. Van Nostrand	\$7.00 to \$8.00	15	1
Road House	Geo. A. Ward	Apply	10	2
Farm House	Mrs. F. Billas	\$8.00	6	2 1/4
Lockwood House	L. L. Lockwood	\$8.00 up	50	1
Private Residence	Mrs. M. Wilson	Apply		1
Private Residence	Mrs. J. Noltemper	\$8.00	8	1 1/2

* P. O. Address, Huntington, N. Y. † P. O. Address, Centreport, N. Y.

**Northport,
N. Y.**

41.6 MILES FROM NEW YORK

12 Trains on Week Days

5 Trains on Sundays

Additional Trains on Saturdays. Electric cars are operated between Northport Village and Northport railroad station. Fare, five cents.

Ackerly House	James A. Ackerly	\$10.00 to \$11.00	60	2 1/4
Private Residence	Mrs. H. H. Bryant	\$8.00	10	2 1/2
Private Residence	Brewster R. Burr	\$7.00 to \$9.00	10-15	3
Farm House	Mrs. Alice I. Ketchum	\$7.00	10	2 1/4
Boarding House	Wm. Ludemann	\$7.00	25	1 1/4
Boarding House	Mrs. J. Werniger	\$8.00	11	3/4

* P. O. Address, Commack, N. Y. † P. O. Address, Fort Salonga, N. Y.

**Smithtown,
N. Y.**

49.1 MILES FROM NEW YORK

12 Trains on Week Days

5 Trains on Sundays

Additional Trains on Saturdays.

Riverside Inn	James P. Kilroy	\$16.00 up	60	3 1/2
Boulevard Inn	Bacchiani Brothers	\$9.00 up	30	3

* P. O. Address, Nesconset, N. Y.

**St. James,
N. Y.**

52 MILES FROM NEW YORK

12 Trains on Week Days

5 Trains on Sundays

Additional Trains on Saturdays.

Shore Inn	Tony Farrel	Apply	50	1
Hotel	F. Eschenbach	\$8.00	25	1 1/4
Hotel	Frank Priode	\$8.00	40	1

**Stony Brook,
N. Y.**

55.2 MILES FROM NEW YORK

12 Trains on Week Days

5 Trains on Sundays

Additional Trains on Saturdays.

Stony Brook Hotel	James Ayers	\$10.00 up	60	1
Hillside Hotel	Stony Brook Association	\$10.00 to \$14.00	100	3/4
Homestead Hotel	Stony Brook Association	\$10.00 to \$14.00	80	1
Pine View House	Irwin G. Hawkins	Apply	25	1
Wopowog Cottage	E. L. Brewer	\$8.00 to \$10.00	18	1 1/2
Farm House	Mrs. W. J. Wood	\$7.00	12	1 1/4
Briarwood Cottage	K. P. Dannelly	\$8.00 to \$10.00	16	1 1/2
Private Residence	Mrs. R. McColl	\$8.00 up	6	1 1/2

**Setauket,
N. Y.**

57 MILES FROM NEW YORK

12 Trains on Week Days

5 Trains on Sundays

Additional Trains on Saturdays.

Shore Acres Inn	Wm. D. Oakes	\$8.00 up	50	1
Hotel	H. S. Tyler	\$8.00	30	1
The Willows	Mrs. Marie Masse	\$9.00 to \$10.00	25	1
Private Residence	Mrs. W. S. Dveckman	\$8.00 to \$9.00	8	1
Miller Lake House	Frank Jayne	\$7.00 to \$10.00	20	1
Private Residence	Mrs. Sarah R. Davis	\$8.00	—	1 1/4

* P. O. Address, East Setauket, N. Y.

36.4 MILES FROM NEW YORK
Additional Trains on Saturdays.

12 Trains on Week Days

5 Trains on Sundays

*Port Jefferson,
N. Y.*

NAME OF HOUSE OR HOTEL	PROPRIETOR	TERMS PER WEEK	NUMBER ACCOMMODATED	MILES FROM STATION
Seaside House	P. V. Smith	\$5.00 to \$12.00	30	1
Seaside	Albert Walker	\$10.00	25	1
Seaside House	G. E. Brown	\$10.00 to \$12.00	21	1
Seaside House	Livingston Darling	Apply	25	3/4
Seaside Inn	Wm. R. Thompson	Apply	50	1
Seaside View House	Mrs. T. D. Vanderveer	Apply	20	Near
Seaside Residence	Mrs. E. A. Ricketts	\$2.00 to \$10.00	9	1 1/4

37.4 MILES FROM NEW YORK
Additional Trains on Saturdays.

4 Trains on Week Days

3 Trains on Sundays

*Millers Place,
N. Y.*

Seaside House	Elisha E. Davis	\$5.00 to \$10.00	25	1
---------------	-----------------	-------------------	----	---

37.5 MILES FROM NEW YORK
Additional Trains on Saturdays.

5 Trains on Week Days

3 Trains on Sundays

*Shoreham,
N. Y.*

Shoreham Inn	Geo. Lynn	\$17.00	50	3/4
Private Residence	Mrs. Frances U. Warden	\$12.00 to \$15.00	11	3/4

38.7 MILES FROM NEW YORK
Additional Train on Saturdays.

5 Trains on Week Days

3 Trains on Sundays

*Wading River,
N. Y.*

Wading River Hotel	A. B. Davis	\$8.00 to \$9.00	30	1
Wading River	Mrs. L. M. Hallock	Apply	10	1
Wading Inn	Chas. R. Rogers	\$10.00	35	Near

Resorts on the South Shore

39.1 MILES FROM NEW YORK

5 Trains on Week Days

4 Trains on Sundays

*Sheepshead Bay,
N. Y.*

NAME OF HOUSE OR HOTEL	PROPRIETOR	TERMS PER WEEK	NUMBER ACCOMMODATED	MILES FROM STATION
Manhattan Villa	E. L. Schaeffer	\$10.00 up	75	Near

39.1 MILES FROM NEW YORK

5 Trains on Week Days

4 Trains on Sundays

*Manhattan
Beach, N. Y.*

Manhattan Hotel	Jon. P. Groves	\$14.00 up	600	Near
-----------------	----------------	------------	-----	------

39.1 MILES FROM NEW YORK

22 Trains on Week Days

10 Trains on Sundays

*Richmond Hill,
N. Y.*

Richmond Villa	Mrs. H. C. Purchase	\$8.00 to \$9.00	18	Near
Richmond Hotel	Paul Gamble	Apply	20	Near

39.1 MILES FROM NEW YORK

24 Trains on Week Days

18 Trains on Sundays

*Rosedale,
N. Y.*

Rosedale House	Mrs. H. J. Cooper	\$7.00	20	Near
Private Residence	Mrs. L. G. Clark	\$6.00	10	Near

39.1 MILES FROM NEW YORK

58 Trains on Week Days

37 Trains on Sundays

*Valley Stream,
N. Y.*

Valley Stream Residence	Mrs. Sarah F. Smith	\$7.00	8	1/4
Valley Stream House	Conrad Staack	\$7.00 up	40	1/4
Valley Stream Cottage	Mrs. M. C. Tepe	\$7.00 up	10	1/4
Valley Stream House	Mrs. L. Schluter	\$8.00 up	15	Near

39.1 MILES FROM NEW YORK

53 Trains on Week Days

28 Trains on Sundays

*Hewlett,
N. Y.*

Hewlett	Frank G. Hotly	Apply	50	Near
---------	----------------	-------	----	------

39.1 MILES FROM NEW YORK

53 Trains on Week Days

28 Trains on Sundays

*Woodmere,
N. Y.*

Woodmere Hotel	Jon. T. Ott	\$8.00 to \$10.00	12	Near
----------------	-------------	-------------------	----	------

*Lawrence,
N. Y.*

21.9 MILES FROM NEW YORK

53 Trains on Week Days

25 Trains on Sundays

NAME OF HOUSE OR HOTEL	PROPRIETOR	TERMS PER WEEK	NUMBER ACCOMMODATED	MILES FROM STATION
Additional Trains on Saturdays				
Private Residence	Mrs. S. A. Homan	\$10.00	12	Near

*Far Rockaway,
N. Y.*

23.1 MILES FROM NEW YORK

53 Trains on Week Days

25 Trains on Sundays

Additional Trains on Saturdays				
Elstone Park Hotel	Herndon & Saunders	Apply	150	Near
Clarendon Hall	Harry C. Gunther	\$12.00 up	50	Near
Greyloch Hall	L. S. Mort	\$10.00 to \$25.00	85	1/2
Far Rockaway Hotel	Elizabeth Fitzgerald	Apply	100	Near
Hudson House	Mrs. John Cline	Apply	60	Near
"The Chelsea"	Miss M. M. Kean	\$12.00 up	75	Near
Bolger Cottage	S. A. Bolger	\$8.00 to \$10.00	12	Near
Savoy Hotel	Kauffman & Kemethur	\$8.00 up	75	Near
Boarding House	Mrs. John May	\$10.00 to \$15.00	35	1/2
Tack-a-Pou-sha House	Manager	Apply		
New York Hotel	M. W. Burns	\$10.00 to \$12.00	100	Near
Van Wyck House	S. A. Bolger	\$8.00 to \$12.00	60	Near
Ocean View House	Mrs. S. J. Martin	\$12.00 to \$14.00	50	Near
The Hedges	M. A. Diffenderfer	Apply	60	1/2
La Grange-Seminole	Geo. C. LaGrange	\$10.00 to \$15.00	100	1/2
St. Lawrence Hotel	Mrs. John May	\$10.00 to \$25.00	40	1/2
Boarding House	Mrs. A. Moore	Apply	40	1/2
Belvedere Hotel	Mrs. S. J. Campbell	Apply	100	1/2

*Edgemere,
N. Y.*

24.1 MILES FROM NEW YORK

49 Trains on Week Days

27 Trains on Sundays

Additional Trains on Saturdays				
Edgemere Club Hotel	T. D. Green, Manager	Apply	300	Near
Hotel Lyndeman	B. S. Lindeman	\$4.00	90	Near
The Edgewater Hotel	Josephine Salomon	Apply	50	Near
Halfway House	Jürgen Mehrkens	\$10.00 up	65	1/2
Hoffman House	Sophie Hoffman	Apply	75	1/2
The Frontenac	Hyams & Schlesinger	Apply	75	1/2

*Arverne,
N. Y.*

25.6 MILES FROM NEW YORK

49 Trains on Week Days

27 Trains on Sundays

Additional Trains on Saturdays				
New Hotel Arverne	Alfred C. Michaud	\$20.00 up	450	Near
Colonial Hall Hotel	N. P. Waldman	\$25.00 up	250	Near
Falk's Cottage Hotel	Carrie R. Einstein	\$20.00 to \$35.00	100	Near
Boarding House	Miss Mershon	Apply	40	Near
The Breakers	C. A. Finch	Apply	60	Near
Ocean Crest House	Mrs. M. M. Bibbo	Apply	80	Near
The Rosemont	Wm. T. Montgomery	\$15.00 up	60	Near
Elizabeth Hotel	S. Weisskopf	Apply	75	Near
Majestic Hotel	Henry Prince	\$15.00 up	300	Near
Hotel Vendome	Miss A. M. Cojean	Apply	100	Near

*Hammel,
N. Y.*

17.6 MILES FROM NEW YORK

44 Trains on Week Days

23 Trains on Sundays

Additional Trains on Saturdays				
Margaret Cottage	Mrs. A. Schmidt	Apply	40	Near
Revere House	Mrs. Janette Schwartz	\$12.50 to \$15.00	125	Near
Boarding House	Wm. Bohan	\$9.00	25	Near
Hotel	Mrs. J. G. Geary	\$9.00 to \$10.00	50	Near
Avondale Hotel	J. E. Eldert	Apply	100	Near
Eldert's Surf Hotel	Luke Eldert	Apply	50	Near
Hotel Elderturst	Luke Eldert	Apply	150	Near
St. Luke's Hotel	J. Eldert	Apply	50	Near

*Holland,
N. Y.*

17.9 MILES FROM NEW YORK

44 Trains on Week Days

85 Trains on Sundays

Additional Trains on Saturdays				
Hotel Pasadena	F. A. Gruver	\$15.00 up	150	Near
Narragansett House	Philip Stacom	\$10.00 up	250	Near
Empire Cottage	Chas. R. Hammell	\$10.00 up	50	Near
Boarding House	Mrs. E. M. Blum	\$10.00 up	45	Near
Shoreacres	Helen Mueller	\$10.00 to \$12.00	25	Near

18.4 MILES FROM NEW YORK

44 Trains on Week Days

85 Trains on Sundays

Seaside,
N. Y.

Additional Trains on Saturdays:

NAME OF HOUSE OR HOTEL	PROPRIETOR	TERMS PER WEEK	NUMBER ACCOMMODATED	MILES FROM STATION
Schilling's Atlas Hotel	C. A. Schilling's Sons	Apply	150	Near
New York Hotel	David I. Fello	Apply	120	Near
West End Hotel	S. Weiss	\$12.00 to \$15.00	100	Near
Hotel	Sea Beach Hotel Co.	Apply	100	Near
Hotel	L. & M. Hemburger	Apply	100	Near
Montauk Hotel	Wm. E. Ryan	Apply	18	Near

19.2 MILES FROM NEW YORK

44 Trains on Week Days

85 Trains on Sundays

Rockaway Park,
N. Y.

Additional Trains on Saturdays:

NAME OF HOUSE OR HOTEL	PROPRIETOR	TERMS PER WEEK	NUMBER ACCOMMODATED	MILES FROM STATION
The "Park Inn"	Manager	Apply	200	Near
Boarding House	Mary Phillips	Apply	40	Near
Ocean Breeze Cottage	Mrs. E. T. Shelly	\$14.00 up	25	$\frac{1}{2}$
Lenox Victoria	Wm. Flak	\$15.00 up	75	Near
Paula Cottage	Paul Gruendler	\$10.00 to \$20.00	22	Near
Marlborough Court	Mrs. J. G. Wagner	Apply	75	Near
The Sansara	Julius Beissbarth	Apply	100	Near
Boarding House	B. Fuss	\$15.00 up	100	Near
Croella Cottage	A. E. Dickert	Apply	25	Near

* P. O. Address, Belle Harbor, N. Y.

19.6 MILES FROM NEW YORK

33 Trains on Week Days

25 Trains on Sundays

Lynbrook,
N. Y.

Additional Trains on Saturdays:

NAME OF HOUSE OR HOTEL	PROPRIETOR	TERMS PER WEEK	NUMBER ACCOMMODATED	MILES FROM STATION
Private Residence	Mrs. David L. Frost	\$6.00 up	12	1
Farm House	M. D. Creed	Apply	25	$\frac{1}{2}$
Private Residence	M. D'Orsay	\$8.00	3	$\frac{1}{2}$
Private Residence	Mrs. F. L. Rood	Apply	6-8	1
Private Residence	Mrs. E. S. Bruce	\$8.00 up	6	Near
Boarding House	Mrs. Albertine Harde	\$7.00 to \$10.00	10	Near

20.6 MILES FROM NEW YORK

15 Trains on Week Days

17 Trains on Sundays

East Rockaway,
N. Y.

Additional Trains on Saturdays:

NAME OF HOUSE OR HOTEL	PROPRIETOR	TERMS PER WEEK	NUMBER ACCOMMODATED	MILES FROM STATION
East Rockaway Hotel	E. E. Bosen	\$14.00	40	Near
Breezy Water View House	Mrs. Dykers White	\$7.00	50	Near
Bay View Cottage	Mary A. DeKoning	\$7.00 up	18	Near

24.1 MILES FROM NEW YORK

15 Trains on Week Days

17 Trains on Sundays

Wreck Lead,
N. Y.

Additional Trains on Saturdays:

NAME OF HOUSE OR HOTEL	PROPRIETOR	TERMS PER WEEK	NUMBER ACCOMMODATED	MILES FROM STATION
Hotel	Jacob Rathman	\$10.00 up	40	Near

* P. O. Address, Long Beach, N. Y.

24.3 MILES FROM NEW YORK

10 Trains on Week Days

12 Trains on Sundays

Queenswater,
N. Y.

Additional Trains on Saturdays:

NAME OF HOUSE OR HOTEL	PROPRIETOR	TERMS PER WEEK	NUMBER ACCOMMODATED	MILES FROM STATION
Queenswater Hotel	R. Molitor	\$8.00 to \$12.00	40	Near

* P. O. Address, Long Beach, N. Y.

25.1 MILES FROM NEW YORK

19 Trains on Week Days

21 Trains on Sundays

Long Beach,
N. Y.

Additional Trains on Saturdays:

NAME OF HOUSE OR HOTEL	PROPRIETOR	TERMS PER WEEK	NUMBER ACCOMMODATED	MILES FROM STATION
Hotel Nassau	Merry & Boumer	Apply	350	Near
Hotel Abell	James M. Abell	\$17.50 up	60	Near

21.5 MILES FROM NEW YORK

21 Trains on Week Days

11 Trains on Sundays

Rockville Centre,
N. Y.

Additional Trains on Saturdays:

NAME OF HOUSE OR HOTEL	PROPRIETOR	TERMS PER WEEK	NUMBER ACCOMMODATED	MILES FROM STATION
Maple View Boarding House	Mrs. Samuel Hill	\$8.00 to \$10.00	20	1
Private Residence	Mrs. W. T. Odell	\$6.00	10	Near
Ketcham Lodge	Nellie Ketcham	\$10.00	20	Near
Elmer Cottage	Mrs. M. A. Brown	\$6.00	12	Near
Private Residence	Ida E. Cullimore	Apply	—	$\frac{1}{2}$

**Baldwin,
N. Y.**

23.5 MILES FROM NEW YORK 18 Trains on Week Days 11 Trains on Sundays
Additional Train on Saturdays.

NAME OF HOUSE OR HOTEL	PROPRIETOR	TERMS PER WEEK	NUMBER ACCOMMODATED	MILES FROM STATION
Brookside Inn Hotel	Geo. M. Winslow	\$12.00 to \$16.00	25	$1\frac{1}{4}$
Private Residence	C. Kessel	\$6.00	2	Near

**Freeport,
N. Y.**

24.8 MILES FROM NEW YORK 20 Trains on Week Days 11 Trains on Sundays
Additional Train on Saturdays.

Crystal Lake Hotel	A. E. Frost	Apply	125	$1\frac{1}{2}$
The Anchorage	Louis N. Long	\$15.00	75	1
Grove Cottage	Mrs. C. Jensen	\$9.00 to \$12.00	25	$1\frac{1}{2}$
Private Residence	Mrs. C. E. Humphrey	\$7.00 to \$8.00	15	Near
Private Residence	K. M. Edwards	\$6.00 to \$7.00	8	1
Private Residence	Mrs. A. B. Meyer	\$5.00 to \$10.00	14	Near
Private Residence	Mrs. O. Gruser	\$6.00 to \$8.00	8-10	Near

* P. O. Address, Roosevelt, N. Y.

**Merrick,
N. Y.**

26.6 MILES FROM NEW YORK 20 Trains on Week Days 11 Trains on Sundays
Additional Train on Saturdays.

Hotel Merrick	Peter G. Müller	\$10.00	18	Near
Private Residence	Mrs. S. J. Tween	\$8.00	6	Near
Pleasant View Cottage	Mrs. S. Girard	Apply	8-10	$\frac{3}{4}$

**Bellmore,
N. Y.**

27.9 MILES FROM NEW YORK 19 Trains on Week Days 11 Trains on Sundays
Additional Train on Saturdays.

Jack's Tavern Hotel	J. Shields	Apply	40	Near
Private Residence*	Mrs. E. Helme	\$5.00	8-10	$2\frac{1}{2}$
Hotel	A. L. Brown	Apply	14	Near
Fernwood House	David Seaman	\$8.00	8	$\frac{3}{4}$
Worth House	Edward S. Deubert	\$8.00 to \$10.00	50	Near
Grand View Farm*	Laure P. Hedges	\$7.00	6	2

* P. O. Address, Smithville South, N. Y.

**Wantagh,
N. Y.**

28.9 MILES FROM NEW YORK 19 Trains on Week Days 11 Trains on Sundays
Additional Train on Saturdays.

Wantagh Hotel	Henry Uitsch	\$8.00	16	Near
---------------	--------------	--------	----	------

**Seaford,
N. Y.**

30.1 MILES FROM NEW YORK 17 Trains on Week Days 10 Trains on Sundays
Hotel

Radloff & Heitmann	\$8.00	34	Near
--------------------	--------	----	------

**Massapequa,
N. Y.**

31 MILES FROM NEW YORK 19 Trains on Week Days 11 Trains on Sundays
Additional Trains on Saturdays.

Massapequa Hotel	Massapequa Hotel Co.	\$15.00 up	200	$1\frac{1}{2}$
The Laurene	Mrs. P. J. Heinlein	\$8.00 to \$9.00	25	1

**Amityville,
N. Y.**

33.6 MILES FROM NEW YORK 21 Trains on Week Days 11 Trains on Sundays
Additional Trains on Saturdays.

Newpoint Hotel	Lazaro & Co.	\$12.50 up	300	1
Hathaway Inn	Ewen Hathaway	Apply	75	$1\frac{1}{2}$
Wardle's Hotel	Thomas Wardle	\$10.00	40	Near
Private Residence	Mrs. W. H. Hall	\$8.00 to \$9.00	10-11	1
Ocean House	B. F. Conklin	Apply	25	1
Private Residence	Mrs. J. G. Shea	\$7.00 to \$8.00	12	Near
Private Residence	Mrs. H. E. Ketcham	\$7.00 to \$10.00	18-20	$\frac{1}{4}$
Ireland Cottage	Mrs. Louisa Ireland	\$8.00 to \$10.00	25	$\frac{1}{2}$
The Orchard	F. E. Axtell	\$8.00 to \$10.00	8-10	Near
Comfort Hotel	Lazaro & Co.	Apply	75	1
Pine Villa	A. T. Dunn	\$8.00 up	15	Near

36.1 MILES FROM NEW YORK

19 Trains on Week Days

11 Trains on Sundays

*Lindenhurst,
N. Y.*

Additional Trains on Saturdays.

NAME OF HOUSE OR HOTEL	PROPRIETOR	TERMS PER WEEK	NUMBER ACCOMMODATED	STATION	MILES FROM
Private Residence	Carl Schetter	Apply	—	Near	
Private Residence	Mrs. M. Mielke	Apply	8	Near	

38.9 MILES FROM NEW YORK

25 Trains on Week Days

14 Trains on Sundays

*Babylon,
N. Y.*

Additional Trains on Saturdays.

LaGrange House	Mrs. E. W. Walker	Apply	75	1	
Hotel	A. Matthias	\$10.00 up	25	Near	
Sherman House	Sherman Tweedy	\$12.00	50	Near	
Private Residence	Mrs. J. M. Baylis	Apply	25	Near	
Hotel	Eugene Freund	Apply	100	Near	
Weeks Farm House	Mrs. Wm. S. Weeks	\$7.00	12	2	
St. James Hotel	August Bolte	Apply	10	Near	

3 MILES BY STEAMER FROM BABYLON

Towaco Inn*	Town & Country Estates	Apply	125	
-------------	------------------------	-------	-----	--

* Permanent P. O. Address, 527 Fifth Ave., New York, or Babylon, L. I., after June 15th.

*Muncie Island,
N. Y.*

3 MILES BY STEAMER FROM BABYLON

Ocean View House	Mrs. Edw. Arnold	\$10.00 to \$12.00	30	
------------------	------------------	--------------------	----	--

*Oak Island
Beach, N. Y.*

43 MILES FROM NEW YORK

15 Trains on Week Days

9 Trains on Sundays

*Bayshore,
N. Y.*

Additional Trains on Saturdays.

The Linwood Hotel	J. B. Puffis	Apply	75-100	1/4	
The New Cortland	J. E. McGowan	Apply	100	Near	
Hotel	M. A. Shanley	\$14.00 up	60	3/4	
Boarding House	Mrs. John T. Brown	\$8.00 to \$12.00	30	Near	
Bayshore House	Samuel Cox	\$8.00 up	50	Near	
Private Cottage	Mrs. John R. Soper	\$7.00 to \$8.00	14-16	Near	
Boarding House	Ned Dornay	Apply	40-50	1/4	
Private Residence	Mrs. C. A. Wicks	\$7.00	8-10	Near	
Greenlawn Cottage	Miss Eva Wicks	\$8.00 to \$10.00	10	1/4	

9 MILES BY STEAMER FROM BAYSHORE

The Inn*	Point o' Woods Ass'n.	Apply	125	
Boarding House	Samuel R. Pancoast	Apply	20	

* P. O. Address until May 1st, 96 Main St., Flushing, L. I., N. Y.

*Point o' Woods,
N. Y.*

4 MILES BY STEAMER FROM BAYSHORE

New Surf Hotel*	John A. Wilbur	Apply	200	
-----------------	----------------	-------	-----	--

* P. O. Address until May 15th, 334 Fifth Ave., New York City.

*Ocean Beach,
N. Y.*

4 MILES BY STEAMER FROM BAYSHORE

Saltire Casino*	Manager	Apply	50	
-----------------	---------	-------	----	--

* P. O. Address until June 1st, Marbridge Bldg., Broadway and 34th St., New York City.

*Saltire,
N. Y.*

45.4 MILES FROM NEW YORK

13 Trains on Week Days

9 Trains on Sundays

*Islip,
N. Y.*

Additional Trains on Saturdays.

Orowee Hotel	Frank Buchacek	Apply	30	1/4	
Hotel*	Mrs. A. Hoeker	\$7.00 up	25	1	
Hotel*	Frank Markwart	Apply	10	1	
Private Residence	Mrs. E. J. Sprague	Apply	12	1/4	

* P. O. Address, East Islip, N. Y.

Great River, N. Y. 47.6 MILES FROM NEW YORK 13 Trains on Week Days 8 Trains on Sundays
Additional Trains on Saturdays.

NAME OF HOUSE OR HOTEL	PROPRIETOR	TERMS PER WEEK	NUMBER ACCOMMODATED	MILES FROM STATION
The Cornetquot Hotel	Frank Forster	Apply	30	Near
Private Residence	Chas. C. Conkling	\$8.00 to \$10.00	20	1 1/4

Sayville, N. Y. 52.2 MILES FROM NEW YORK 15 Trains on Week Days 8 Trains on Sundays
Additional Trains on Saturdays.

Hotel Delavan	Alfred Sykes	\$12.00 up	75	1 1/2
Elmore Hotel	John D. Secor	\$12.50	150	1 1/2
South Bay House	C. A. Brown	\$12.00 to \$15.00	125	1
Holborn Hall	M. H. Holborn	Apply	30	1 1/2
Kensington Hotel	A. S. Kennedy	Apply	40	1 1/4
The Sea Side Hotel	S. S. Ackerly	Apply	43	1 1/4
Farm House	Mrs. A. Birth	\$7.00 to \$8.00	8	1 1/4
Fairview Cottage	Mrs. N. Krietsch	\$8.00 to \$10.00	14	Near
The Inn	F. L. Davis	\$12.50 to \$15.00	30	1 1/4
Private House	H. P. Holmes	\$8.00	25	1 1/2

Bayport, N. Y. 53.5 MILES FROM NEW YORK 13 Trains on Week Days 8 Trains on Sundays
Additional Trains on Saturdays.

Private Residence	Mrs. T. L. Hawkins	\$7.00 to \$8.00	7	Near
Eureka House	Geo. T. Carr	\$8.00	30	1 1/2

Blue Point, N. Y. 54.9 MILES FROM NEW YORK 13 Trains on Week Days 8 Trains on Sundays
Additional Trains on Saturdays.

Hallatt House	J. R. Snedecor	\$12.00	300	1 1/4
Boarding House	J. R. Warner	Apply	75	Near
South Bay House	J. A. Senger	Apply	300	Near
Ye Anchorage Inn	Will Graham	Apply	28	1 1/4
Private Residence	Mrs. D. H. Cochran	\$10.00 to \$12.00	40	1 1/2
Doxsee House	Mrs. M. Doxsee	\$8.00 to \$10.00	20	Near
Blue Point Inn	John H. Schaefer	\$8.00 to \$12.00	25	Near
Robinson House	Mrs. A. Gabler	\$8.00 to \$10.00	35	Near
Hotel and Inn	John Lovell	Apply	25	Near
Moffett House	C. C. Scheunflug	Apply	30	Near
Boarding House	Harry Smith	Apply	25	Near
Warner House	Mrs. Grace Field-Raynor	Apply	100	1 1/2

Patchogue, N. Y. 56.2 MILES FROM NEW YORK 16 Trains on Week Days 9 Trains on Sundays
Additional Trains on Saturdays.

The Clifton	Wm. A. Riley	\$15.00 up	350	1 1/2
Patchogue Inn	F. W. Monell	Apply	75-100	1 1/4
Laurel House	E. Fisher	\$10.00 to \$20.00	125	Near
Ocean Avenue Hotel	Sanford Weeks	\$12.00 to \$21.00	275	1 1/2
Boarding House	Mrs. W. Lechtrecker	Apply	25	Near
Hotel	D. H. Casey	\$12.00 to \$20.00	56	Near
Hotel	H. P. Wright	\$9.00 to \$12.00	75	1
Farm House	Mrs. E. Jones	\$8.00 to \$10.00	30	1
Boarding House	Anna Kurth	\$9.00 to \$10.00	25	1 1/2
Boarding House	Mrs. Frank Newins	\$8.00 to \$10.00	12-15	Near
Private Residence	Mrs. Chas. Rohde	\$5.00 up	17	1 1/4
Cedar Grove Cottage	John Knobloch	Apply	20	1 1/4
Lincoln House	Mrs. H. Totschek	\$10.00 up	50	Near
Smithport Hotel	H. O. Dederer	\$12.00 up	75	1 1/4
Butler Cottage	Mrs. Chas. Butler	\$8.00 to \$10.00	12	1 1/4
Ye Old Dunton Inn†	Mehl & Heitzman	\$10.00 up	25	1 1/4
Bayview Villa	Mrs. L. Fechter	\$8.00 to \$14.00	18	1
The Jefferson House	Mrs. C. L. Dreher	Apply	50	Near
The Homestead	Wm. F. Becker	\$10.00 to \$14.00	60	1 1/2
Rose Cottage	L. E. Rose	\$8.00	15	1 1/2
Oak Cottage	Mrs. L. M. Overton	\$8.00	6	Near

† P. O. Address, East Patchogue, N. Y.

60.1 MILES FROM NEW YORK 5 Trains on Week Days 3 Trains on Sundays *Bellport, N. Y.*
Additional Trains on Saturdays.

NAME OF HOUSE OR HOTEL	PROPRIETOR	TERMS PER WEEK	NUMBER ACCOMMODATED	MILES FROM STATION
Wyandotte Hotel	Wm. Krenner	\$17.50 to \$28.00	120	1 1/4
Hotel Bellport	S. T. Taylor	Apply	25	1
Boarding House	Jas. B. Shaw	\$16.00 to \$30.00	40	1
Goldthwaite Inn	J. K. Hawkhurst	\$12.00 to \$21.00	80	1 1/4
Hotel Bell Inn	B. E. Raymond	Apply	125	1 1/4

61.9 MILES FROM NEW YORK 5 Trains on Week Days 3 Trains on Sundays *Brookhaven, N. Y.*
Additional Trains on Saturdays.

The Edgewater	R. de Areaz	\$10.00 to \$12.00	35	1
Private Residence	Mrs. H. E. Hawkins	Apply	10-12	1
Private Residence	H. Badetty	\$12.00	12-15	1

68.6 MILES FROM NEW YORK 6 Trains on Week Days 4 Trains on Sundays *Centre Moriches, N. Y.*
Additional Trains on Saturdays.

Hotel	Muller Bros.	\$15.00	80	Near
The Clearview	Chas. H. Warner	\$16.00 to \$15.00	80	1
Boarding House	F. K. Bowditch	\$12.00 to \$15.00	60	1
Terry Cottage	Misses A. & E. Terry	\$10.00	20	1
Breeze Cottage	Mrs. T. F. Ryan	\$9.00 to \$12.00	30	1 1/4
Boarding House	J. C. Bishop	\$12.00 up	25	1 1/4
Ocean House	Ellison Bishop	\$9.00 to \$12.00	35	1
Pequot House	A. C. Goldbeck	\$8.00 to \$15.00	55	1 1/4
Farm House	B. E. Sachs	\$8.00	40	1
Tangler Inn	Hallock Welles	\$10.00 to \$17.50	11	1 1/4

70.1 MILES FROM NEW YORK 5 Trains on Week Days 4 Trains on Sundays *East Moriches, N. Y.*
Additional Trains on Saturdays.

The Tuthill Point	Edward M. Sammis	\$11.00 up	100	1
Hotel Beachview	John A. Kennedy	Apply	150	1 1/4
Boarding House	James P. Brady	\$10.00 to \$12.00	80	1 1/4

72.2 MILES FROM NEW YORK 7 Trains on Week Days 4 Trains on Sundays *Eastport, N. Y.*
Additional Trains on Saturdays.

Boarding House	Geo. W. Tuthill	\$10.00 to \$13.00	40	1 1/4
----------------	-----------------	--------------------	----	-------

73.8 MILES FROM NEW YORK 6 Trains on Week Days 4 Trains on Sundays *Speonk, N. Y.*
Additional Trains on Saturdays.

Speonk Inn	Edw. Davidow	Apply	20	Near
------------	--------------	-------	----	------

76.6 MILES FROM NEW YORK 5 Trains on Week Days 4 Trains on Sundays *Westhampton, N. Y.*
Additional Trains on Saturdays.

Hotel*	H. J. Howell	\$21.00 up	125	1 1/4
The Hampton Inn*	S. F. Griffing	\$17.50 up	110	1
Cedar Beach House	Fred'k R. Jagger	\$11.00 to \$20.00	75	2 1/2
Boarding House	Mrs. S. R. Jagger	Apply	25	2 1/2
Boarding House*	George H. Rogers	\$8.00 to \$12.00	25-35	1 1/2
Farm House*	J. W. Rockefeller	\$8.00 to \$10.00	10	1
Apaucock Point House	John E. Raynor	\$15.00 to \$25.00	100	2
Farm House*	Eunice B. Rogers	\$12.00	15	1 1/4
Quogue Homestead	Mrs. M. K. Foster Dobson	\$10.00 to \$25.00	40	2 1/2
The Moorland*	Mrs. S. C. Smith	\$14.00 to \$25.00	80	1 1/2
Boarding House*	Mrs. H. H. Raynor	\$14.00 up	30	1 1/2

* P. O. Address, Westhampton Beach, N. Y. † P. O. Address, Quogue, N. Y.

*Quogue,
N. Y.*

79.4 MILES FROM NEW YORK

5 Trains on Week Days

4 Trains on Sundays

Additional Train on Fridays and Saturdays.

NAME OF HOUSE OR HOTEL	PROPRIETOR	TERMS PER WEEK	NUMBER ACCOMMODATED	MILES FROM STATION
Post House	Henry Gardiner	\$20.00 to \$30.00	150	1 1/2
Gardiner House	Henry Gardiner	\$20.00 to \$30.00	15-20	1 1/2
Quogue House	S. H. Hallock	Apply	125	2
Cooper House	Mrs. R. A. Townsend	Apply	40-50	2
Howell House	Mrs. J. Pierson Howell	\$17.00 up	20-30	2
Hotel*	Willard S. French	\$14.00 to \$21.00	175	1 1/4
Boarding House*	Mrs. D. A. Vail	\$10.00 to \$15.00	25	1 1/2
Farm House*	W. M. Randall	\$9.00	10	2
East Quogue House*	G. W. Howell	\$8.00 to \$10.00	35	1 1/4
Caffrey House*	J. W. Caffrey	\$9.00 to \$12.00	40	3
Roselawn House*	L. E. Carter	\$8.00 to \$10.00	19	1 1/4
Boarding House*	J. E. Tunnell	\$8.00 to \$10.00	66	3 1/2
Buehmiller's Inn*	August Buehmiller	Apply	35	1

* P. O. Address, East Quogue, N. Y.

*Good Ground,
N. Y.*

84.4 MILES FROM NEW YORK

5 Trains on Week Days

4 Trains on Sundays

Additional Trains on Saturdays.

Ocean View House	Otis M. Corwin	\$10.00 to \$14.00	60	1 1/2
Hotel Grening	Paul C. Grening	\$17.50 to \$25.00	150	2
Hotel	L. G. Squires	\$8.00 to \$10.00	75	1 1/2
Prospect House	Geo. E. Bellows	Apply	50	1 1/2
Boarding House	John H. Corwin	\$9.00 to \$12.00	30	1 1/4
Peninsula House	J. H. Squires	\$8.00 to \$9.00	30	1 1/2
Seacrest House	Geo. A. Lane	\$9.00 to \$12.00	40	1 1/2
The Teutengren House	Mrs. G. M. Teutengren	Apply	12	1
Hotel	Peter Nehrhaus	\$10.00 to \$12.00	75	1
Boarding House	Geo. E. Corwin	\$9.00 to \$12.00	40	1 1/2

*Southampton,
N. Y.*

91.5 MILES FROM NEW YORK

5 Trains on Week Days

4 Trains on Sundays

Additional Train on Fridays and Saturdays.

Hotel	Irving L. Terry	Apply	100	1
Commercial Hotel	F. A. Wagner	\$20.00	60	Near
Boarding House	P. E. Fanning	\$8.00 to \$10.00	35	2
Farm House	Mrs. Thos. Howard	\$8.00	10	4

*Watermill,
N. Y.*

94.2 MILES FROM NEW YORK

5 Trains on Week Days

4 Trains on Sundays

Additional Trains on Fridays and Saturdays.

Farm House	Jonah Rogers	\$11.00 to \$13.00	25-35	1 1/4
Boarding House	E. G. Goodale	Apply	10	1 1/4

*Bridgehampton,
N. Y.*

96.8 MILES FROM NEW YORK

5 Trains on Week Days

4 Trains on Sundays

Additional Train on Fridays and Saturdays.

Boarding House*	C. S. Rogers	Apply	35	2
Private Residence	Mrs. M. E. Beckwith	\$12.00	9	1 1/4
Topping Cottage*	Mrs. A. Topping Saunders	\$8.00 to \$12.00	18	2 1/4

* P. O. Address, Sagaponack, N. Y.

*Sag Harbor,
N. Y.*

101.6 MILES FROM NEW YORK

5 Trains on Week Days

4 Trains on Sundays

Additional Train on Fridays and Saturdays.

Sea View House*	John E. Morris	\$10.00 up	100	1
American Hotel	A. M. Youngs	\$12.00 to \$15.00	25	Near
Hotel Nassau	Manager	Apply	—	Near
Vail House	Mrs. C. G. Vail	\$8.00 to \$12.00	50	Near
Private Residence	R. F. Pricot	\$10.00 to \$15.00	25	1 1/4
Private Residence	Mrs. F. L. Moffat	\$8.00	16	2

* Week-day Trains during the summer stop at Noyack Road.

*Wainscott,
N. Y.*

99.3 MILES FROM NEW YORK

5 Trains on Week Days

3 Trains on Sundays

Additional Train on Fridays and Saturdays.

Private Residence	Louisa E. Osborn	Apply	—	1
Hotel	Mrs. J. O. Hopping, M'gr.	\$10.00 up	30	1 1/4

103.2 MILES FROM NEW YORK 5 Trains on Week Days
Additional Train on Fridays and Saturdays.

4 Trains on Sundays *Easthampton,
N. Y.*

NAME OF HOUSE OR HOTEL	PROPRIETOR	TERMS PER WEEK	NUMBER ACCOMMODATED	MILES FROM STATION
Malden Inn	M. L. Mayo	Apply	100	$\frac{3}{4}$
Boarding House	B. M. Osborne	\$18.00 to \$25.00	50	1
The Hunting	Chas. S. Parsons	Apply	60	Near

106.6 MILES FROM NEW YORK 5 Trains on Week Days
Additional Train on Fridays and Saturdays.

4 Trains on Sundays *Amagansett,
N. Y.*

NAME OF HOUSE OR HOTEL	PROPRIETOR	TERMS PER WEEK	NUMBER ACCOMMODATED	MILES FROM STATION
Sea View House	W. M. Terry	Apply	—	$\frac{1}{4}$
Ocean House	Mrs. K. M. Terry	\$11.00	40	$\frac{1}{4}$
Windmill Cottage	J. C. Parsons	\$15.00	50	$\frac{1}{4}$
Old Red House	Geo. S. Schellinger	Apply	30	$\frac{1}{4}$
Atlantic House	Mrs. John Edwards	\$10.00 to \$12.00	25	$\frac{1}{4}$
Amagansett Lodge	Mrs. E. Vaughn	\$14.00	30	Near

115 MILES FROM NEW YORK 3 Trains on Week Days
Additional Train Fridays and Saturdays.

1 Train on Sundays *Montauk,
N. Y.*

NAME OF HOUSE OR HOTEL	PROPRIETOR	TERMS PER WEEK	NUMBER ACCOMMODATED	MILES FROM STATION
Boarding House	W. D. Parsons	Apply	40	$\frac{1}{2}$
Montauk Inn	Theodore H. Cooklin	Apply	12	$\frac{1}{4}$

Resorts in the Central Section and on Peconic Bay

9.2 MILES FROM NEW YORK

23 Trains on Week Days

16 Trains on Sundays

*Forest Hills,
N. Y.*

NAME OF HOUSE OR HOTEL	PROPRIETOR	TERMS PER WEEK	NUMBER ACCOMMODATED	MILES FROM STATION
Forest Hills Inn	DeLong & Gillan	\$11.00 to \$15.00	200	At Station

11.7 MILES FROM NEW YORK

Frequent Train Service on Week Days and Sundays

*Jamaica,
N. Y.*

NAME OF HOUSE OR HOTEL	PROPRIETOR	TERMS PER WEEK	NUMBER ACCOMMODATED	MILES FROM STATION
Boarding House	Mrs. G. W. Hawhurst	Apply	35	Near

17 MILES FROM NEW YORK

24 Trains on Week Days

13 Trains on Sundays

*Floral Park,
N. Y.*

NAME OF HOUSE OR HOTEL	PROPRIETOR	TERMS PER WEEK	NUMBER ACCOMMODATED	MILES FROM STATION
Hotel Richter	Max Richter	\$3.00 up	60	Near
Floral Park Hotel	Schmeising Bros.	\$8.00 to \$9.00	40	Near
Private Residence	Chas. E. Parnell	\$7.00	3	Near

18.3 MILES FROM NEW YORK

11 Trains on Week Days

10 Trains on Sundays

*New Hyde Park,
N. Y.*

NAME OF HOUSE OR HOTEL	PROPRIETOR	TERMS PER WEEK	NUMBER ACCOMMODATED	MILES FROM STATION
Hotel	A. M. Schulz	\$5.00	20	Near

20.4 MILES FROM NEW YORK

19 Trains on Week Days

12 Trains on Sundays

*Garden City,
N. Y.*

NAME OF HOUSE OR HOTEL	PROPRIETOR	TERMS PER WEEK	NUMBER ACCOMMODATED	MILES FROM STATION
Garden City Hotel	J. J. Lannin Co.	Apply	200	Near

22.9 MILES FROM NEW YORK

4 Trains on Week Days

1 Train on Sundays

*Lake View,
N. Y.*

NAME OF HOUSE OR HOTEL	PROPRIETOR	TERMS PER WEEK	NUMBER ACCOMMODATED	MILES FROM STATION
Lake View Inn	Mohrmann & Kinn	Apply	10	$\frac{1}{4}$

20.6 MILES FROM NEW YORK

25 Trains on Week Days

16 Trains on Sundays

*Mineola,
N. Y.*

NAME OF HOUSE OR HOTEL	PROPRIETOR	TERMS PER WEEK	NUMBER ACCOMMODATED	MILES FROM STATION
Hotel	Wm. P. Nash	\$11.00	30	Near
Hotel	Frank P. Krug	Apply	50	$\frac{1}{2}$

Hicksville, N. Y. 26.9 MILES FROM NEW YORK 15 Trains on Week Days 9 Trains on Sundays
Additional Trains on Saturdays.

NAME OF HOUSE OR HOTEL	PROPRIETOR	TERMS PER WEEK	NUMBER ACCOMMODATED	MILES FROM STATION
Private Residence	Mrs. Daniel Matschat	\$7.00	20	Near

Central Park, N. Y. 29.9 MILES FROM NEW YORK 8 Trains on Week Days 4 Trains on Sundays
Central Park Hotel.....Thos. H. Maurer.....\$8.00 20 Near

Farmingdale, N. Y. 32.2 MILES FROM NEW YORK 8 Trains on Week Days 4 Trains on Sundays
Additional Train on Saturdays.

Farm House	Mrs. A. Van Nostrand	\$6.00	12	1 1/2
Farm House	Chas. G. Keil	\$7.00	30	2
Private Residence	Mrs. G. H. Walters	\$7.00	20	1
Farm House	Mrs. Walter S. Bold	\$7.00 to \$8.00	16	1
Farm House	G. Holzwarth	\$6.00	20	1
Farmview Farm	Mrs. Stephen N. Lott	\$5.00 to \$7.00	8	2
Private Residence	Mrs. Wm. A. Wieners	\$7.00 to \$8.00	7	1 1/4

* P. O. Address, R. F. D. No. 1, Hicksville, N. Y.
† P. O. Address, R. F. D. No. 2, Huntington, N. Y.

Pinelawn, N. Y. 34.4 MILES FROM NEW YORK 6 Trains on Week Days 3 Trains on Sundays
Additional Train on Saturdays.

Pinelawn Hotel	Chas. J. Listerer	Apply	25	3/4
Green View Hotel	Casper Helbrook	\$7.00	25	Near
Boarding House	Mrs. G. A. Bedell	\$6.00 to \$7.00	12	1

* P. O. Address, R. F. D. No. 2, Huntington, N. Y.

Wyandanch, N. Y. 36.7 MILES FROM NEW YORK 7 Trains on Week Days 3 Trains on Sundays
Additional Train on Saturdays.

Spence Lodge	Mrs. L. E. Odings	\$7.00	20	Near
--------------	-------------------	--------	----	------

Deer Park, N. Y. 38.5 MILES FROM NEW YORK 7 Trains on Week Days 4 Trains on Sundays
Additional Train on Saturdays.

Canda House	Leo Canda	\$7.00 up	20	1 1/4
Boarding House	Miss S. Seaman	\$7.00	8	Near

Brentwood, N. Y. 42.9 MILES FROM NEW YORK 7 Trains on Week Days 4 Trains on Sundays
Additional Train on Saturdays.

The Ross Health Resort	W. H. Ross, M.D.	\$17.50 to \$35.00	50	Near
Arboret Inn	H. G. Wagener	\$13.00 to \$28.00	35	Near

Central Islip, N. Y. 43.3 MILES FROM NEW YORK 7 Trains on Week Days 4 Trains on Sundays
Additional Train on Saturdays.

Farm House	Miss Louise Wills	\$9.00	8	1 1/2
Private Residence	Mrs. C. W. Lucas	\$7.00	15	Near
Private Residence	Mrs. Wm. Boneker	\$7.00	5	Near

Ronkonkoma, N. Y. 50.3 MILES FROM NEW YORK 7 Trains on Week Days 5 Trains on Sundays
Additional Train on Saturdays.

Lake Front Hotel	Manager	Apply	75	1
Columbia Cottage	Mrs. M. Murray	\$7.00 to \$8.00	12	Near
Boarding House	Mrs. L. Glinzman	\$7.00 to \$8.00	34	3/4
Becker's Hotel	Edw. Becker	Apply	20	Near
Private Residence	Mrs. Fred Belz	\$5.00	8	Near

Old Holbrook, N. Y. 51.8 MILES FROM NEW YORK 1 Train on Week Days 1 Train on Sundays

Private Residence	Mrs. A. A. Rinehardt	\$7.00	15-20	3/4
Private Residence	F. Kowanz	\$7.00	30	Near
Pine Hurst Hotel	Yerk & Ulrich	\$7.00	40	Near

53.8 MILES FROM NEW YORK			2 Trains on Week Days	1 Train on Sundays	<i>Holtsville, N. Y.</i>
NAME OF HOUSE OR HOTEL	PROPRIETOR	TERMS PER WEEK	NUMBER ACCOMMODATED	MILES FROM STATION	
Private Residence	Mrs. A. C. Beach	\$7.00	6	Near	

56.3 MILES FROM NEW YORK		3 Trains on Week Days	2 Trains on Sundays	<i>Medford, N. Y.</i>
Additional Train on Saturdays.				
Hotel	L. Hoffmann	\$8.00	20	Near
Private Residence	Adolph Hoffman	\$8.00	15	$\frac{1}{2}$
Farm House	Mrs. Sumney	\$5.00 to \$7.00	8	3

60.6 MILES FROM NEW YORK		3 Trains on Week Days	2 Trains on Sundays	<i>Yaphank, N. Y.</i>
Additional Train on Saturdays.				
The Lilies	C. W. Weeks	Apply	20-30 1¼	

67.2 MILES FROM NEW YORK			4 Trains on Week Days	3 Trains on Sundays	<i>Manorville, N. Y.</i>
Boarding House	G. W. Raynor	\$7.00	10	Near	
Boarding House	M. J. Lane	\$7.00	25	Near	
Farm House	P. E. Voiz	\$7.00	16	Near	

75.4 MILES FROM NEW YORK		5 Trains on Week Days	3 Trains on Sundays	<i>Riverhead, N. Y.</i>
Additional Train on Fridays and Saturdays.				
Long Island House	F. J. Corwin	Apply	75	Near
Griffin House	W. W. & H. V. Griffin	\$14.00	80	Near
Farm House*	A. Benjamin	\$10.00	40	2½
Farm House*	Harvey Squire	\$10.00	35	2½
Farm House*	J. H. Goodale	Apply	25	2½
Farm House*	M. A. Havens	\$10.00	40-50	2
Boarding House	L. Clarke	\$6.00 to \$12.00	9	Near
* P. O. Address, Flinders, N. Y.				

80.4 MILES FROM NEW YORK		4 Trains on Week Days	3 Trains on Sundays	Jamesport, N. Y.
Additional Train on Fridays and Saturdays.				
Miamogue House*	I. Seymour Corwin	\$12.00 up	125	$\frac{1}{2}$
Hotel*	E. Downs & Son	Apply	150	$\frac{1}{2}$
Hotel*	Emily Downs	\$10.00 to \$12.00	50	$\frac{1}{2}$
Private Residence*	M. L. Corwin	\$7.00 to \$8.00	19	$\frac{1}{2}$
Boarding House*	J. H. Carter	\$8.00	12	$\frac{1}{2}$
Private Residence	Mrs. Jas. N. Tutthill	\$6.00	4	Near
Tutthill House	E. W. Tutthill	\$7.00	12	$\frac{1}{2}$
* P. O. Address, South Jamesport, N. Y.				

82 MILES FROM NEW YORK			2 Trains on Week Days	3 Trains on Sundays	<i>Laurel, N. Y.</i>
Farm House	The Misses Fanning	\$7.00	8	$\frac{1}{2}$	

84.5 MILES FROM NEW YORK		4 Trains on Week Days	3 Trains on Sundays	Mattituck, N. Y.
Additional Train on Fridays and Saturdays.				
Mattituck House	Riley Bros.	\$10.00	50	Near
Mattituck Harbor Inn	H. W. Klein	\$12.00	75	$\frac{1}{2}$
Boarding House	Seymour H. Tutthill	\$8.00 to \$10.00	30	$\frac{1}{2}$
Hotel	J. P. Zenzins	\$10.00 to \$15.00	30	Near
Farm House	Mrs. B. Conkling	\$8.00 to \$10.00	15-20	Near
Boarding House	Fred'k Bleking	Apply	35	$\frac{1}{2}$
Shady Point House	W. S. DuBois	\$8.00 to \$10.00	30	$\frac{1}{2}$
The Anneton House	A. Sturman	\$8.00 to \$10.00	30	Near
Boarding House	Willis A. Tutthill	\$10.00	20	$\frac{1}{2}$

87.4 MILES FROM NEW YORK		4 Trains on Week Days	3 Trains on Sundays	<i>Cutchogue, N. Y.</i>
Additional Train on Fridays and Saturdays:				
Private Residence	Miss C. A. Smith	\$7.00 to \$10.00	12	1½
Sound View Farm House*	John Lindsay	\$8.00	16	1
* P. O. Address: R. F. D. No. 38, Mattituck, N. Y.				

*Southold,
N. Y.*

92.2 MILES FROM NEW YORK

4 Trains on Week Days

3 Trains on Sundays

Additional Train on Saturdays.

NAME OF HOUSE OR HOTEL	PROPRIETOR	TERMS PER WEEK	NUMBER ACCOMMODATED	MILES FROM STATION
Paumotu Inn	Minna H. Edwards	\$10.00 to \$15.00	100	1 1/4
Southold Hotel	Thos. Hoiniks	\$10.00 to \$12.00	40-50	Near
Farm House	Martin Lehr	\$9.00	25	1
Farm House	E. F. Jewell	Apply	15	1
Farm House	J. C. Booth	\$8.00	25	1
Park Hotel	August Hiby	\$8.00 to \$9.00	50	1

*Greenport,
N. Y.*

66.4 MILES FROM NEW YORK

4 Trains on Week Days

3 Trains on Sundays

Additional Train on Fridays and Saturdays.

NAME OF HOUSE OR HOTEL	PROPRIETOR	TERMS PER WEEK	NUMBER ACCOMMODATED	MILES FROM STATION
Wyandank Hotel	C. C. Wright	\$12.00 to \$15.00	75	Near
Ye Clark House	Miss B. M. Clark	\$14.00 up	25	Near
Hotel	Mrs. L. J. Young	\$12.00 to \$14.00	90	Near
Boarding House	Mrs. A. C. Corwin	\$8.00 to \$10.00	40	2
Hotel*	John Miller	Apply	100	5
Boarding House*	C. B. King & Son	\$8.00 to \$10.00	50	5
Orient Point Inn*	L. M. Barnett	\$15.00 to \$16.00	55	9
Boarding House*	A. W. Hummel	\$9.00	40	5
Private House	Mrs. Annie Perry	\$8.00	8	1 1/4
Private Residence	Mary Gleichman	\$7.00	8	Near

* P. O. Address, Orient, N. Y.

*Shelter Island,
N. Y.*

97.4 MILES FROM NEW YORK

† Reached by Ferry from Greenport

NAME OF HOUSE OR HOTEL	PROPRIETOR	TERMS PER WEEK	NUMBER ACCOMMODATED	MILES FROM STATION
The Prospect House*	James Eben	\$21.00	300	†
Chequilt Inn*	Belle P. Crook	\$12.00 up	100	†
Oxford House	E. P. French	\$12.00 up	100	†
Tuthill House	Mrs. A. T. Tuthill	\$10.00	25	†
Boarding House	Henry Walther	\$10.00 to \$15.00	50-60	†
South Ferry House	Irving Clark	\$10.00 to \$12.00	25-30	†
Winyah*	C. J. Moss	\$10.00 to \$15.00	85	†
Forest House*	J. Bauer	\$9.00 to \$12.00	90	†
Private Residence	Mrs. W. Worthington	\$8.00	8-10	†
Private Residence*	Mrs. H. M. Whitney	\$9.00 to \$10.00	10	†
Private Residence*	Mrs. E. A. Fuller	\$9.00 to \$10.00	12	†
Private Residence	Mrs. E. L. Hewditch	\$10.00	18	†
Farm House	Mrs. Lina Hallberg	\$8.00	15	†
Shelter Island House*	Louis Behringer	\$10.00 to \$15.00	50	†
Private Residence*	Mrs. Louis Glück	\$8.00 up	8	†

* P. O. Address, Shelter Island Heights, N. Y.

—New York—Pennsylvania Station (7th Avenue and 32d Street). 42 Broadway, Fifth Avenue Building (5th Avenue and 23d Street). 133 West 125th Street. 574 Columbus Avenue.
 —Brooklyn—Long Island R. R. Station, cor. Flatbush and Atlantic Aves. Long Island R. R. Station, Atlantic and Nostrand Aves. Long Island R. R. Station, East New York, Atlantic and Vesta Aves.
 —Long Island City—Long Island R. R. Station.

*Long Island
 Railroad
 Ticket
 Offices*

*Reservation
 of Space in
 Parlor Cars*

—All principal trains have parlor cars. Parlor Car Seats may be secured at the following offices:
 —New York—Pennsylvania Station (7th Avenue and 32d Street). 42 Broadway, Fifth Avenue Building (5th Avenue and 23d Street).
 —Brooklyn—Flatbush Avenue Station.
 —Long Island City—Long Island R. R. Station.
 Parlor Car Tickets must be purchased when reservations are made.
 Parlor Car Tickets will not be redeemed unless presented for redemption at the office where purchased one hour before departure of train.
 Passengers from Brooklyn may secure parlor-car seats to be taken at Jamaica.
 Passengers from New York (Pennsylvania Station) may secure seats in parlor cars on trains from Long Island City, to be taken at Jamaica.

NEW YORK OFFICES

19 East 17th Street.....	Telephone 947 Stuyvesant
613 Sixth Avenue, cor. 36th Street.....	Telephone 2327 Murray Hill
*Foot East 34th Street, N. Y. City.....	Telephone 7675 Madison Square
300 Canal Street.....	Telephone 3130 Franklin
257 Mercer Street.....	Telephone 8325 Spring
*574 Columbus Avenue, cor. 88th Street.....	Telephone 2457 Riverside
*133 West 125th Street.....	Telephone 492 Morningside
1047 Sixth Avenue.....	Telephone 4865 Columbus

BROOKLYN OFFICES

*MAIN OFFICE, 88 Hanson Place.....	Telephone 561 Prospect
*L. I. R. R. Depot, Flatbush Avenue.....	Telephone 900 Hunters Point
*501 Broadway, Williamsburgh.....	Telephone 2940 Williamsburgh
*Atlantic Avenue, near Vesta Avenue.....	Telephone 196 East New York
*4123 Third Avenue, near 41st Street.....	Telephone 3810 Sunset
Bath Beach.....	Telephone 204 Bath Beach
*Sheepshead Bay.....	Telephone 326 Coney Island
Vandervoort Park.....	Telephone 5464 Midwood

*Long Island
 Express
 Offices*

§2- If it is desired to forward baggage by express, checks may be left at the nearest office shown above, where prompt wagon service will be furnished to secure baggage and forward by first available train.

§3- Travelers arriving over connecting railroads or steamboat lines may take their checks direct to East 34th Street Office, where they will be exchanged for Long Island R. R. checks, upon payment of transfer charge of 40 cents for each trunk and 25 cents for each valise.

Passengers having baggage checked to a station where there is no agent, or for a train arriving at destination of baggage when the station is closed, must claim the same at destination by surrendering checks at the baggage-car door; otherwise it will be carried to the next station beyond at which agent is on duty.

Attention is called to facilities at principal Long Island local stations for the transfer of baggage from station to residence. Passengers with checked baggage can have same promptly delivered by leaving checks with station agent. Charge for such service within delivery limits, 25 cents per piece.

Patrons who desire to have baggage checked from their residence to stations on the Long Island R. R. can arrange for same at offices marked (*), where tickets are on sale.

Baggage to be checked at the Pennsylvania Station should be delivered fifteen minutes before leaving time of train, and at East 34th Street Station forty minutes before leaving time of train at Long Island City.

Every endeavor will be made to forward baggage on same train with the passenger, but this is not always possible, and is not guaranteed.

For further information apply to W. Van Valkenburgh, Supt. of Express, Long Island City, N. Y.

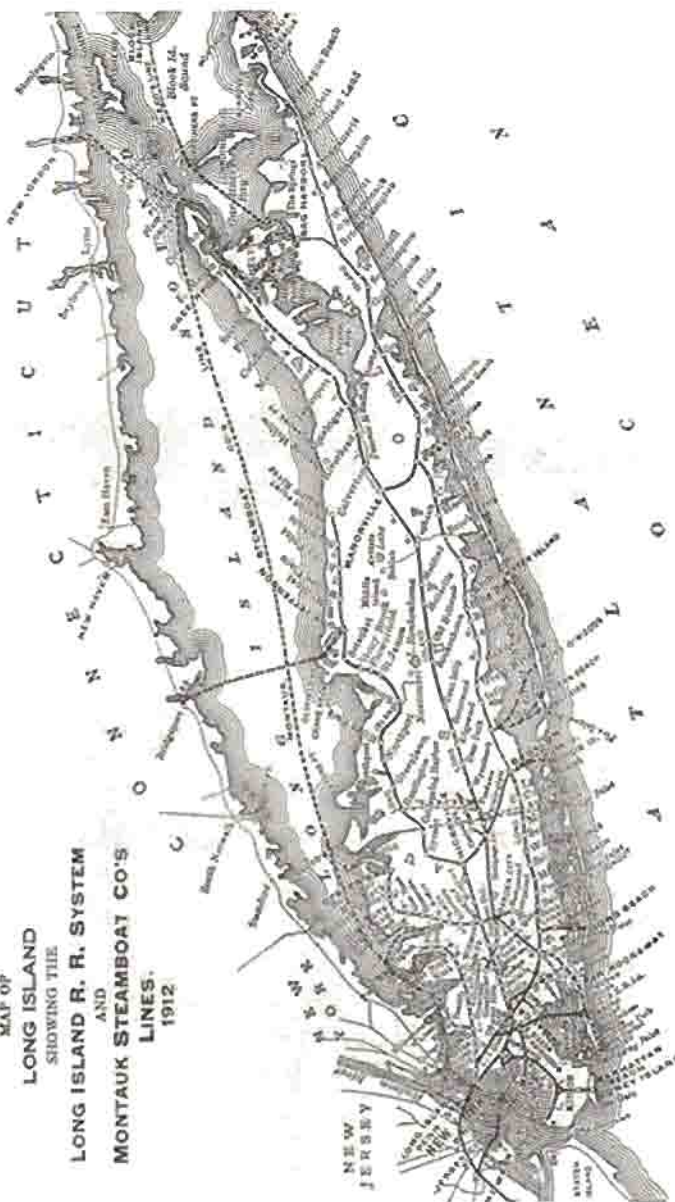
* PRINCIPAL OFFICES—Long Island City, Telephone 900 Hunters Point.

Index

	PAGE		PAGE
Amagansett.....	46, 69	Manhasset.....	53
Amityville.....	34, 64	Manhattan Beach.....	24, 61
Aquehogue.....	50	Massapequa.....	34, 64
Arverne.....	24, 62	Mastic.....	41
Babylon.....	36, 65	Mattituck.....	50, 71
Baldwin.....	32, 64	Medford.....	49, 71
Bayport.....	39, 66	Merriek.....	32, 64
Bayshore.....	37, 65	Mill Neck.....	17
Bayside.....	61, 58	Millers' Place.....	23, 61
Bayville.....	17, 59	Minna.....	49, 69
Belle Harbor.....	25	Montauk.....	46
Belle Terre.....	33	Moriches.....	41
Bellmore.....	32, 64	Morris Park.....	47
Bellport.....	39, 67	Muncie Island.....	36, 65
Blue Point.....	59, 66	Murray Hill.....	58
Brentwood.....	49, 70	Nassau Boulevard.....	48
Bridgehampton.....	45, 68	Neponset.....	25
Broadway.....	10	New Hyde Park.....	48, 69
Brookhaven.....	67	New Suffolk.....	50
Calverton.....	50	Northport.....	20, 60
Cedarhurst.....	28	Norwood.....	28
Central Islip.....	49, 70	Oak Island.....	36, 65
Central Park.....	49, 70	Onkdale.....	39
Centre Moriches.....	41, 67	Ocean Beach.....	38, 65
Centrepont.....	30	Oceanside.....	32
Cold Spring Harbor.....	17, 59	Old Holbrook.....	70
College Point.....	10, 58	Orient.....	52
Copague.....	36	Oyster Bay.....	17, 59
Cutchogue.....	50, 71	Patchogue.....	39, 66
Deer Park.....	49, 70	Peconie.....	41
Douglaston.....	11	Pinelawn.....	49, 70
East Moriches.....	41, 67	Plandome.....	11
East Rockaway.....	30, 63	Point o' Woods.....	38, 65
East Marion.....	52	Port Jefferson.....	23, 61
Easthampton.....	46, 69	Port Washington.....	12, 58
Eastport.....	41, 67	Queens.....	48
East Williston.....	12, 58	Queenswater.....	30, 63
Edgemere.....	26, 62	Quogue.....	42, 68
Far Rockaway.....	26, 62	Richmond Hill.....	47, 61
Farmingdale.....	49, 70	Riverhead.....	50, 71
Fire Island.....	38	Rockaway Park.....	25, 63
Floral Park.....	48, 69	Rockville Centre.....	32, 63
Flushing.....	10, 58	Rocky Point.....	23
Forest Hills.....	47, 69	Rosetonkoma.....	49, 70
Freeport.....	32, 64	Rosedale.....	30, 61
Garden City.....	48, 69	Roslyn.....	12, 59
Glen Cove, Glen Street.....	15, 38	Sag Harbor.....	45, 68
Glen Head.....	12, 59	Salt Lake.....	38, 65
Golf Grounds.....	63, 57	Sayville.....	39, 66
Good Ground.....	42, 68	Sea Cliff.....	13, 59
Groat Neck.....	11, 38	Seaford.....	32, 64
Great River.....	39, 66	Sensido.....	61
Greenlawn.....	18, 60	Setauket.....	23, 69
Greensport.....	42, 72	Sheepshead Bay.....	28, 61
Hamlet.....	62	Shelter Island.....	52, 72
Hempstead.....	48	Shinnecock Hills.....	44
Hempstead Gardens.....	29	Shoreham.....	23, 61
Hewlett.....	38, 61	Smithtown.....	21, 60
Hicksville.....	49, 70	Southampton.....	45, 68
Holland.....	62	Southold.....	51, 72
Hollis.....	47	Speonk.....	42, 67
Holtsville.....	49, 71	Springfield.....	29
Huntington.....	18, 60	St. Albans.....	39
Islip.....	38, 65	St. James.....	21, 60
Jamaica.....	47, 69	Stony Brook.....	21, 60
Jamestown.....	50, 71	Syosset.....	17, 69
Kew.....	47	Valley Stream.....	28, 61
Kings Park.....	20	Wading River.....	7, 61
Lake View.....	29, 69	Walmscott.....	46, 68
Laurel.....	50, 71	Wantagh.....	32, 64
Laurelton.....	30	Watermill.....	45, 68
Lawrence.....	27, 62	Westbury.....	49
Lindenhurst.....	36, 65	Westhampton.....	42, 67
Little Neck.....	11	West Hempstead.....	29
Locust Valley.....	17	Whitestone.....	10, 58
Long Beach.....	30, 63	Woodmere.....	28, 61
Lynbrook.....	30, 63	Wreck Lead.....	30, 63
Malba.....	10	Wyandanch.....	49, 70
Manorville.....	50, 71	Yaphank.....	50, 71

*Then is that loveland island fait,
And the pale health-seeker findeth there
The wine of life in its pleasant air.*

MAP OF
LONG ISLAND
SHOWING THE
LONG ISLAND R. R. SYSTEM
AND
MONTAUK STEAMBOAT CO'S
LINES.
1912.

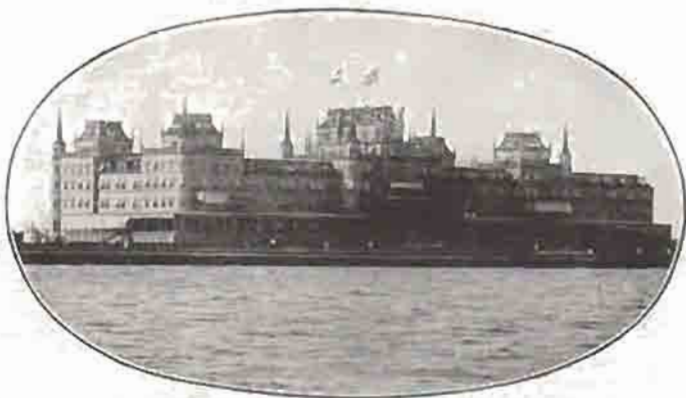


LONG ISLAND SOUND ON THE NORTH AND THE ATLANTIC OCEAN ON THE SOUTH AND EAST—
THIS IS WHY LONG ISLAND IS COOL IN SUMMER

MANHATTAN BEACH

The ideal summer resort for business men and their families, combining, as it does, the pleasures of the seashore with the accessibility of New York City Hotels to the business and amusement centres.

AMERICA'S LEADING SEASHORE RESORT



Complete accommodations for Automobilists. Ideal Out-of-door restaurant.
Superb Surf Bathing.

ORIENTAL HOTEL

WILL OPEN ABOUT JUNE 20th

under the Management of

MR. JOSEPH P. GREAVES

(of the Florida East Coast Hotel System)

NEW YORK OFFICE.

243 FIFTH AVE.

Conducted entirely
on the European Plan

Guests of 1912 will
find many improvements

Brightwaters

Bayshore, Long Island



Head of Venetian Yacht Harbor and Floral Plaza at Merrick Road

Brightwaters Album of Snap Shots No. 1

Mailed upon request

SEA LAKES and PINES

ACKERSON HOUSES COTTAGES and BUNGALOWS

OFFICES:

1 W. 34th St.
NEW YORK
and on the property

LONG ISLAND'S MASTER DEVELOPMENT

A Gentleman's country estate converted into a high-class suburban residential park, where those of MODERATE MEANS may enjoy all the advantages, comforts and conveniences of the larger landed estate proprietors.

BRIGHTWATERS

Contains over 1200 acres; five spring-fed lakes; Venetian Yacht Harbor one mile long, 175 feet wide, with latest safety mooring devices; winding drives and walks; grand old shade and ornamental trees; forests of oaks and pines; Floral Plaza and other horticultural effects; white sandy beaches and bathing pavilion with observatory, two piers extending 800 feet into the Great South Bay; Country Club House or Casino, together with all facilities for the fullest enjoyment of

EVERY RECREATION OF LAND AND SEA EXCEPT MOUNTAIN CLIMBING

Brightwaters is surrounded on all sides by large private country estates, which, with the beneficial, yet liberal, restrictions affecting the property, insure the permanency of the high-class character of its development.

SERIES OF 1912

ACKERSON BUNGALOWS NESTLED AMONG THE PINES

are pretty, convenient and substantial, contain 6 rooms and bath, cellar, electric light, range, hot and cold water, tastefully decorated, complete in every respect, on plot 50x150, from \$2500 upwards. Write for Bungalow folder No. 1.

T. B. ACKERSON CO., *Developers of Choice Properties and
Builders of Homes of Merit.*



Westinghouse Electric Chafing Dish

Every real woman likes to fuss with a chafing dish. It's a fine way to try new dishes and methods of cooking them.

The Westinghouse Electric Chafing Dish is in a class by itself. It is more economical to operate than any other chafing dish, no matter how heated. It heats much quicker.

No fuel to renew. No special electric fixtures necessary. Just attach to any electric outlet. It is a handsome ornament to any side-board or serving table. It has the Westinghouse *quality* and looks it.

You must have the booklet for the full line of Westinghouse Electric Ware. It shows the Westinghouse quality goods—percolator, toaster-stove, samovar, frying pan, milk warmer, laundry and travelers' irons and other goods.

Send post-card today for a copy to "Westinghouse, Household Dept. K, East Pittsburgh, Pa." If you wish, we can tell you a dealer or lighting company or department store near you that will give you Westinghouse goods and the best of service.

Westinghouse Electric & Manufacturing Co.
East Pittsburgh, Pa.

New York Office, 165 Broadway



Muncie Island

HOTEL and BUNGALOWS AT THE ATLANTIC OCEAN
OPPOSITE BABYLON, LONG ISLAND

WHERE OCEAN BREEZES BLOW

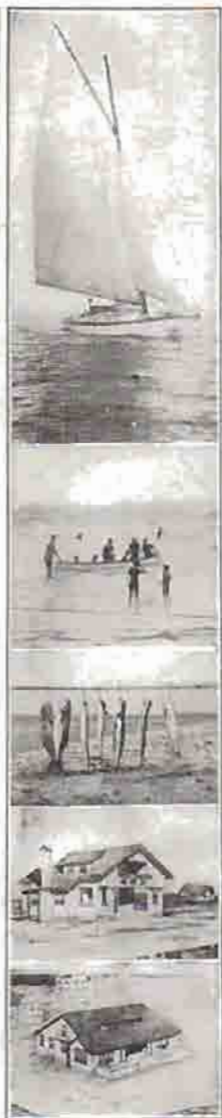
THE HOTEL is restricted to a refined, discriminating patronage, with accommodations for 125 guests. Thoroughly modern, all conveniences, excellent cuisine. *All rooms face on the water.*

Sailing, Canoeing, Surf and Still Water Bathing, Tennis and Dancing. The finest fishing grounds on the Atlantic Coast.

A BUNGALOW on Muncie Island, combining the privileges of the Hotel, offers the ideal realization for *summer living* at the seashore.

Lots for sale completely improved with water, gas, sewers and boardwalks without expense or assessment to purchasers.

Muncie Island boats connect with principal trains (see L.I.R.R. time table). 90 minutes from New York City.



Write for Hotel and Bungalow Booklet giving full information

Town and Country Estates

MAURICE B. THAYER, President

HARRIMAN NAT. BANK BLDG.
527 FIFTH AVE., NEW YORK

Telephones 4797 Bryant
4798

Long Island Moving



Goods moved to or from Long Island homes by experienced men in

Auto Vans

Best of Service Guaranteed. Storage for Household Goods in a

Modern Fireproof Warehouse

Storage for Automobiles

Silver Vaults for Valuables

Experts in all Departments

GUARANTORS OF OUR SERVICE

OFFICERS:

Seth L. Keeney, President
John E. Cassidy, Vice-President
Herbert F. Gunnison, Secretary-Treasurer

DIRECTORS:

Andrew D. Baird
Daniel J. Creem
Robert Furey

T. M. Lloyd
William Hester
J. H. Hallock

John E. Cassidy
Julian D. Fairchild
Herbert F. Gunnison

William M. Van Anden

Seth L. Keeney
John McNamee
E. LeGrand Beers

THE CLIFTON ^(Bonaire) and COTTAGES

PATCHOGUE, L. I.
ADMIRABLY LOCATED ON HIGH GROUND,
DIRECTLY ON THE GREAT SOUTH BAY.

New Cafe
and Grill
— 3 —



Garage for
40 Cars
— 5 —

RESTRICTED to a refined and exclusive patronage. Conducted up to the highest standard of cuisine and service. The County in which The Clifton is located is said to be the second most healthful in the U. S. Universally recommended because of the superiority of the climate of this particular section of L. I., and the delightful temperature which is usually from fifteen to seventeen degrees below that of New York City in summer. The extensive grounds afford every facility for all kinds of outdoor sports. Commutation from New York is made easy by well-equipped and frequent trains from 33rd Street, which are met by The Clifton auto 'bus.

ROOMS EN SUITE WITH PRIVATE BATH

Daily orchestra concerts, carefully arranged social functions, sailing, fishing, surf and still water bathing, aquatic sports, dancing, tennis, driving, motoring, billiards, bowling and pool.

Special inducements in terms are offered to weekly and season guests.

Information mailed, or upon request representative will call, or may be seen at Hotel Markwell, 220 West 49th Street, at Broadway.

WILLIAM A. RILEY, Prop'r

The Carrollton Realty Co.

INCORPORATED UNDER THE LAWS OF THE STATE OF NEW YORK
DEVELOPERS AND BUILDERS, SOUTH SHORE OF LONG ISLAND

Bayhampton Park, AT MERRICK SOUTH, adjoining FREEPORT, Choice Villa Plots 50x100, High class restrictions. Handsome, well-built Queen Anne and Colonial cottages. Every improvement. Gas and Water. Elegant and select location. Magnificent view of the Great South Bay. Boating, Bathing and Fishing. Public Dock five minutes from the property and five minutes to the station.

Ormonde Park, AT ROSEDALE—14 miles out. Third-rail system now in operation. Right at New York City line. Very close to Jamaica Bay, where the colossal improvements to the Harbor will be made.

Beautiful Edgerton Square, WANTAGH—26 miles out. Near the Bay; carefully restricted; Villa plots, handsome Queen Anne cottages. Every improvement.

Lakewood Park, between Rockville Centre and Freeport, opposite Baldwin Station, 20 miles out, ten minutes to the Bay. Building lots and plots. Trolley direct to New York. City improvements.

Hazelwood Gardens, in the heart of the Pines, at Central Islip, 43 miles out, main line. New motor parkway opposite property. Building lots run from 125 to 160 feet deep.

South Bay Estates, BELLSHORE, 25 miles out, right at the station, and overlooking the Great South Bay; magnificent residence Park, consisting of 1600 building lots; large frontage on the Merrick Road; handsomely developed, and reasonably restricted.

Buying large tracts for cash enables us to establish lowest prices ever quoted for choice property. Titles guaranteed by TITLE GUARANTEE & TRUST CO. of New York. Capital, \$15,000,000. Call, phone or write us for particulars of any of these properties.

Carrollton Realty Company

Suite 514-515 WORLD BLDG., NEW YORK, N. Y.

Telephone, 3154 Beekman

At Massapequa
Long Island

The Massapequa Hotel
Opens May 25th



THIS Hotel is within easy communication of New York, running time 48 minutes. Is the first hotel out from New York receiving un-interrupted sweep of Ocean air; is on the Great South Bay. Patrons enjoy Boating, Fishing, Bathing, Golf, Tennis and all summer sports. Excellent service and cuisine. Very moderate rates. For booking particulars of this Hotel, and also for full information in regard to delightful home sites, well located lots and houses in New York's greatest suburban centre, *MASSAPEQUA*, apply

QUEENS LAND AND TITLE CO.

Telephone
1023 Bryant

TIMES BLDG., 42nd ST., N. Y.

GARDEN CITY

IS NEW YORK'S MOST BEAUTIFUL SUBURB

GARDEN CITY is the only town on Long Island that has had a modern sewer system for the last eight years.

GARDEN CITY has perfect surface drainage naturally, and is miles from any standing or stagnant water.

GARDEN CITY spring water is so pure and sweet, it is bottled and sold all over the country.

GARDEN CITY has been and is restricted against all nuisances.

GARDEN CITY has the best schools in the country.

GARDEN CITY has the best Hotel on Long Island, thoroughly and beautifully furnished and ably managed. Large wings have just been completed; every room communicating with private bath; new ball-room, new a la carte dining room, new machinery, boilers, equipment and furnishings. Its capacity is now doubled and its justly famous comfort much increased. Open all the year.

GARDEN CITY streets are eighty to one hundred and eighty feet in width, and all are beautifully shaded by handsome trees.

GARDEN CITY has about one hundred acres devoted to parks.

GARDEN CITY streets are piped for gas, electricity, sewer and water. No unsightly poles along the streets. All of its wires and cables are in conduits under ground, or on poles on the back lot lines.

GARDEN CITY has a handsome casino, furnished by the Company for club purposes, free of charge to residents.

GARDEN CITY is the home of the famous Garden City Golf Club.

GARDEN CITY is the home of the well-known Salisbury Links, the only public subscription course in America. Its eighteen-hole course affords to its patrons the accommodations of a good club-house containing a club maker's shop in charge of a competent professional.

GARDEN CITY has a new garage, now accommodating 160 cars. It has a thoroughly equipped machine shop for repairs and various supplies of all kinds.

GARDEN CITY plots are of various sizes, ranging in price from \$700 up.

GARDEN CITY has added a new development of a square mile, which is the very best yet on Long Island. Ask about it.

For Further Information Write

THE GARDEN CITY COMPANY

GAGE E. TARBELL
320 FIFTH AVE.
NEW YORK CITY

GEO. L. HUBBELL
General Manager
GARDEN CITY, N. Y.

Garden City Hotel

GARDEN CITY

LONG ISLAND



THE GARDEN CITY HOTEL has become noted as an ideal all-the-year home, catering exclusively to a *refined and discriminating clientele*. The house itself is a beautiful modern structure of brick and marble. Doubled in size this year it now contains three hundred rooms, two hundred and fifty private baths, and every known convenience for the comfort of its guests, situated in a magnificent park in close proximity to the many fine country estates of Long Island.

Thirty-five minutes to the heart of New York City. Golf, driving, motoring, swimming pool, tennis, billiards and excellent music throughout the year; large ball room, fine à la Carte dining room; cuisine and service unsurpassed.

J. J. LANNIN CO., Props. JOSEPH LANNIN, Mgr.

ALSO GREAT NORTHERN HOTEL

118 W. 57th St. and 109-121 W. 56th St., NEW YORK CITY

Argyle Park, Babylon, Long Island

on Great South Bay



Unexcelled for

BOATING
BATHING
FISHING
GOLF
TENNIS, Etc.

Peerless Roads for Automobiling. Ideal Cottages for Sale or Rent. Furnished or Unfurnished. Also a few very desirable Plots for Sale. Terms to suit.

Realty Trust

60 LIBERTY STREET

NEW YORK



Malba

*on the North Shore
of the Sound*

Residences
completed and ready
for occupancy.

Villa sites directly on
the water, 18 minutes
from Herald Square, on
completion of Electrifi-
cation.

Write or Phone

Realty Trust

60 Liberty Street
NEW YORK

The Edgemere Club Hotel

EDGEMERE, L. I.



LOCATED directly on the ocean but forty minutes from Wall Street, and thirty-three minutes from new Pennsylvania Station without change, restricted to a most refined, discriminating patronage, operated up to the highest standard of cuisine and service, there is no resort offering the same advantages to those who desire to remain in close touch with business during the summer months.

Information regarding the Club feature will be furnished, or representative will call and explain same, on application to

T. D. GREEN, *Manager.*

Booking Office

HOTEL WOODWARD, BROADWAY AND 55TH STREET
NEW YORK CITY

Ocean Beach, Fire Island



Stucco Cement Bungalow
Four Rooms \$700



The Pioneer Developer
of Fire Island



Surf Bathing

Think It Over

We sell the things that improve the health and increase the wealth of human happiness. What are they?—Good air, pure water, surf bathing, still-water bathing, fishing, shooting, boating, cool refreshing ocean breezes and *Seashore Lots* at Ocean Beach, Fire Island. Prices \$150 per lot and upward. Furnished cottages and bungalows to rent. Illustrated descriptive booklet free. Write us today.

Ocean Beach Improvement Co.

John A. Wilbur, President

334 Fifth Avenue, New York, N. Y.

New Surf Hotel at Ocean Beach



New Surf Hotel



A Catch of Bluefish

A new, modern, up-to-date Hotel serving good shore dinners and catering to a high class family patronage. For rates and further particulars address

Ocean Beach Hotel Company

Ocean Beach, Suffolk County, N. Y.

Prior to June 1st, address 334 Fifth Avenue, New York, N. Y.



The WYANDOTTE BELLPORT, LONG ISLAND

COTTAGES with table-board and for house-keeping. Situated 25 feet above the water and looking directly on it. Golf Links, Surf and Still Bathing and all Water Sports. Rooms en suite with baths. Rates \$3 to \$4.

Fourteen Years under present Management

Open Year Round

WM. KREAMER, Prop.

Elmhurst
Cottages
For Sale

Forest Hills
Lots & Houses
For Sale

The
Cord Meyer
Company

Cottages
Built from
Plans

Elmhurst Office
Broadway & Whitney
Avenue, Elmhurst, L. I.
Forest Hills, Long Island
New York Office
62 William St., N. Y.

ESTABLISHED 1848

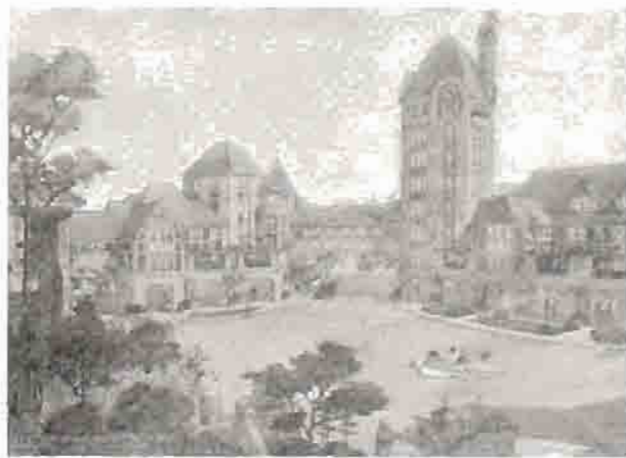
TOCH BROTHERS

MANUFACTURERS & IMPORTERS

~*~*~ SPECIALISTS IN ~*~*~
TECHNICAL PAINTS, COLORS, CHEMI-
CALS, VARNISHES AND JAPANS

WRITE FOR PRICE LIST
& COLOR CARD OF OUR
READY-FOR-USE PAINTS

320 FIFTH AVENUE
NEW YORK CITY, N. Y.
WORKS: LONG ISLAND CITY



FOREST HILLS INN

At
FOREST HILLS
GARDENS

Forest Hills, L. I.

15 Minutes from Pennsylvania Station, N. Y. City

Open All Year

MODERN FIRE-
PROOF FAMILY
HOTEL

Gillan & DeLong, Mgrs.

THE SEA VIEW HOUSE

stands on high ground, and, as its name implies, from its broad piazzas miles of ocean front are to be seen. To the east the view is across well-kept meadows and fields of waving grain. The hotel is but five minutes' walk from the post-office or the beach and ten minutes' walk from the depot. It is a modern building with large airy rooms, and is in every way conducted in accordance with the most advanced ideas of taste and comfort.



The hotel is lighted by gas, has electric call bells, hot and cold baths, local and long-distance telephone, and connection by phone with a first-class livery. The appointments of the dining room and the service at the tables are the best. The house opens for the summer season June 1st. A 'bus from the hotel will meet all trains.

The hotel is lighted by gas, has electric call bells, hot and cold baths, local and long-distance telephone, and connection by phone with a first-class livery. The appointments of the dining room and the service at the tables are the best. The house opens for the summer season June 1st. A 'bus from the hotel will meet all trains.

For any further information or for terms, apply to W. M. TERRY, Proprietor, Sea View House, Amagansett, Long Island. Telephone call 20. No charge for storing Automobiles belonging to guests.

O. L. Schwencke Land & Investment Co.

(Established 20 Years)

277 BROADWAY - NEW YORK CITY
302 FULTON AVE. - HEMPSTEAD

Illustrated Booklet Free

Describing most desirably located Suburban Properties—Lots—Plots—Small Farms—Bungalow Sites—Houses—Large and Small Acreage Tracts in Hempstead and vicinity

Bird's-Eye View, Maps, Prices, etc., upon application

*Largest
Owners of
Long
Island
Real
Estate*

The Corn Exchange Bank

NEW YORK CITY, N. Y.

Queens County Branch:

Borden Avenue and Forest Street, Long Island City

Roseton Branch:

75 Fulton Avenue

Brooklyn Branch:

Centre and Amsterdam Streets

Long Island City Branch:

Jackson Avenue and Fourth Street

Flushing Branch:

114 Main Street

Flatbush Avenue Branch:

13 and 21 Flatbush Avenue, Brooklyn

Greenpoint Branch:

Greenpoint Avenue and Main Street, L. I. City

Myrtle Avenue Branch:

Brooklyn and Myrtle Avenue, Brooklyn

Plaza Branch:

Bridge Plaza and Academy Street, L. I. City

Pennsylvania St. Branch:

Penn. St., Seventh Avenue and 10th St., New York City

Capital, Surplus and
Undivided Profits, \$8,000,000

Net Deposits, - - 60,000,000

The Large Resources and Efficient Management

GUARANTEE THE
MAXIMUM OF
ADVANTAGES
AND SECURITY

Checks drawn
on this Bank
are payable
through the
New York
Clearing
House



The Hall

GLEN COVE
LONG ISLAND

OPENS JUNE 15TH

WITHIN commuting distance of New York. Attractive to those appreciating a quiet, well ordered house. New wing absolutely fireproof. Private beach. No mosquitoes. References.

ADDRESS
GLEN COVE
L.I.
53 Irving Place, New York

The Anchorage, FREEPORT, LONG ISLAND

Twenty-two miles from New York. On the water.

—LOUIS N. LONG, Manager—

20 trains
on week
days—10
trains on
Sundays.

Commuta-
tion \$8.55

American
and
European
Plans

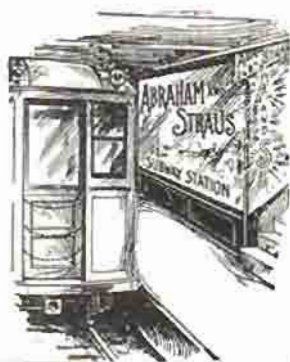
Bathing.
Boating
and
Fishing
Sea Food
of all kinds



Use the
ABRAHAM AND STRAUS

*Subway
Station*

*Continuous trip under shelter from
any Long Island Railway Station
to Long Island's Greatest Store*



**WYNKOOP HALLENBECK
CRAWFORD COMPANY**

General Printers, Binders

**Lithographers
Electrotypers**

497-505 PEARL STREET New York
Corner of Pearl and Park Streets

BRANCHES:

**ALBANY, N. Y.
LANSING, MICH.**

H. C. HALLENBECK
President and Treasurer

C. G. CRAWFORD
Vice-President

H. C. HALLENBECK, Jr.
Asst. Treas. and Secretary

Ocean View House

ON TIANA BAY
GOOD GROUND
LONG ISLAND, N. Y.

Uniquely situated on Tiana Bay—a short distance from the ocean—combining the advantages of seashore and country.

Broad piazza around house—swept daily by the never-failing ocean breezes.

Perfect conditions for all out-door sports—bathing, fishing, tennis, golfing, boating, driving and automobilizing.

Climate delightful and healthful—pure water. Boat daily to the ocean beach, a short distance from the house. Conveyance meets all trains. Telephone connection. Sanitary plumbing. Lighted by acetylene gas.

First-class service at popular prices. House open from June to October. For booklet and terms apply to

O. M. CORWIN, GOOD GROUND, L. I., N. Y.



The Parsons House and Cottages



PARSONS HOUSE

and Cottages, situated on high ground within 500 feet of the Atlantic Ocean, with good views of the ocean from all rooms and from the Piazza. Persons sitting on the Piazza can get the benefit of sea breezes without a sea voyage. The Parsons House and Cottages are lighted by gas, and have hot and cold water baths.

Also bath houses on the Ocean beach right in front of the house for the use of bathers. Local and long-distance telephone. Livery in connection. Parties taken to any part. Good table and service. Open June 15th to October 1st.

Any other information or for terms apply to

W. D. PARSONS, Proprietor, MONTAUK, Long Island, N. Y.

PINTSCH

Mantle Light

The Most Brilliant Illumination with Minimum cost of Maintenance, Reliability Proved on 432,000 Lamps.

ELECTRIC

Axle Equipment

Maintains a Constant Lamp Voltage. Ensures Correct Treatment of Storage Batteries for Maximum Service.

*The
Safety
Standard
of
Reliability*

THERMO JET

Direct Steam Heating

Positive Control of Car Temperatures for Comfort Under all Weather Conditions at a Minimum Cost of Installation and Operation.

*The
Safety
Guarantee
of
Quality*

THE SAFETY CAR HEATING & LIGHTING CO.

PHILADELPHIA
ST. LOUIS
WASHINGTON

2 RECTOR STREET, NEW YORK

CHICAGO, BOSTON
MONTREAL
SAN FRANCISCO

Established 1865
Telephone
Connection

The Daily Star

39-41 Borden Avenue
Long Island City
New York

QUEENS AND BROOKLYN BOROUGH, NEW YORK CITY

YOU CAN'T COVER

this section of New York City thoroughly unless the STAR, WITH ITS THREE EDITIONS

is included in your list
LOW RATES

LONG ISLAND WEEKLY STAR

Friday Mornings Circulation 6,000

Job Printing Department

Everything in the Printing line, from a circular to the finest book and magazine work. Office stationery a specialty.

'Phone, write or call. Will estimate on one job or yearly contract.

THE DAILY STAR

Every Evening Except Sunday. It is the Leading Newspaper of Queens Borough.

CIRCULATION
12,500

GREENPOINT WEEKLY STAR

Saturday Mornings Circulation 8,000

PAUMONOK INN

IN QUIANT SOUTHOLD - LONG ISLAND'S OLDEST TOWN

IDEALLY situated on the 100-foot cliff overlooking Long Island Sound and swept from north and south by the never-failing sea breeze. ¶ The picturesque shore brings the beauties of the Maine Coast within two hours of New York. ¶ The location combines the charms of seashore and country. ¶ Three acres of lawn. Magnificent sea sunsets.

Unexcelled Bathing. Splendid Fishing directly off the hotel grounds. Sailing on the famous Peconic Bays. Driving. Tennis. Croquet. Japanese Service. Gas. Baths. Telephone. Livery. Garage. Open June 15th to Sept. 15th.
T E R M S M O D E R A T E

For booklet apply to M. H. EDWARDS, Southold, Long Island, New York
Until June 10th, 175 Claremont Ave., New York City. Tel. 5750 Morning

Park Avenue Hotel

ENTRANCE TO SUBWAY
STATION DIRECTLY
IN FRONT OF HOTEL

PARK AVENUE (4th Ave.) 329 AND 330 STS.

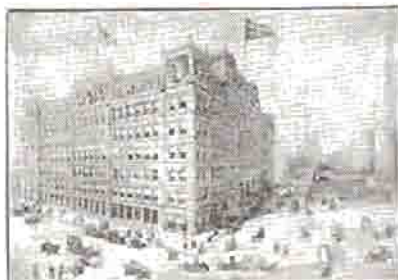
EUROPEAN PLAN

\$1.50 to \$5.00 per day. Accessible to all Railway stations, Steamboat landings and within five minutes of the leading Theatres and Department stores.

ELECTRIC CARS PASSING THIS HOTEL TRANSFER FREE TO ALL PARTS OF THE CITY.

THREE BLOCKS FROM PENN. R. E. AND LONG ISLAND R. R. STATIONS, 7TH AVE. AND 33D ST.

Noted for its open air dining Palm Garden and Verandas.
Menu of a high Standard.



FRED A. REED
PROPRIETOR

¶ TAKE 34TH ST. CROSS-TOWN CAR TO PARK AVE., WHICH LANDS YOU WITHIN ONE BLOCK OF THE HOTEL

BEECHHURST ON THE SOUND

AN EXCLUSIVE RESIDENTIAL COLONY, WITH
CITY ADVANTAGES AND SUBURBAN COMFORTS

Just 35 minutes from 33rd Station Pennsylvania Railroad Only 40 minutes by auto via 59th St. bridge.

BEECHHURST has a fine stretch of sandy beach, a yacht club, a pier accommodating vessels of 20 foot draught, macadamized boulevards: depot on the property.

MOST IDEAL FOR SUMMER HOME; and best year-round suburb. Lots can be obtained ON MOST LIBERAL TERMS. Booklet sent on request.

WRITE, 'PHONE OR CALL

SHORE ACRES REALTY CO.

146 East 34th Street Phone 1481 Madison

New York City

BROOKLYN OFFICE, No. 395 Bridge Street

'Phone 7381 Main

Title Guarantee & Trust Co.

If Buying Real Estate

Come to see this Company for examination and guarantee of title.

It does everything about Real Estate except what the broker does for you.

Capital and Surplus
\$15,000,000

176 Broadway
New York

175 Remsen Street
Brooklyn

350 Fulton Street
Jamaica

67 Jackson Avenue
Long Island City

If Selling Real Estate

Come to this Company for deposit of proceeds at interest and for permanent investment of same. The Company will advise regarding the purchase or sale of Real Estate.

*Enlarged and
improved*

THE LINWOOD

On Great South Bay

*New rooms &
private baths*

May 25 to
Oct. 31

Bathing
Fishing
Games
Dancing



Ideal in Fall

Rates
Three
Dollars
Up

*Booklets and
Terms of*

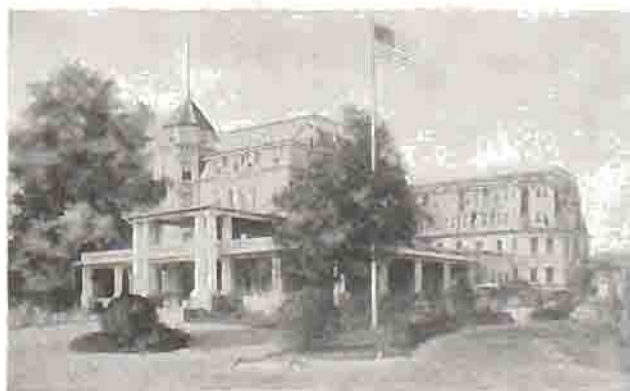
J. B. PULLIS,
BAYSHORE, LONG ISLAND

*Select
Family Hotel*

The Elstone Park Hotel (The Gay Spot of the Rockaways)
"35 Minutes from Broadway"

A Hostelry

*Restricted to a refined,
discriminating clientele*



120 Rooms 120 Baths
Steam Heated

*Thoroughly Modern
Splendid Cuisine
Open all the year
Both Plans*

Bathing, Boating, Fishing

Headquarters for
Northerners, Southerners,
Easterners and Westerners

Booklet mailed upon request

R. G. HERNDON and
CLAUD SAUNDERS
Lessee and Managers

THE ELSTONE PARK HOTEL
FAR ROCKAWAY, L. I.



Belle Terre

ON LONG ISLAND SOUND

"THE RIVIERA OF AMERICA"

A MECCA FOR MOTORISTS AND YACHTSMEN

The magnificent Belle Terre Club, under new management offers *de luxe* accommodations for guests—Cuisine the Finest—GOLF, TENNIS, BATHING, BOATING.

Visitors desiring guest privileges of the Club or on the Estates should apply to the SECRETARY, Belle Terre Club, 111 Broadway, N. Y.

BELLE TERRE ESTATES Incorporated, DEAN ALVORD COMPANY, NEW YORK
General Managers

Belle Terre is a community of PRIVATE ESTATES on a 1300-acre Peninsula—Promontory having five miles of Rugged Bluffs and White Sand Beaches—jutting into Long Island Sound from Port Jefferson, L. I. Landscapes and Sea Views among the finest in the country. —90 minutes from New York.

MACKINAW



The Best and Most Economical

Durable
Cabinets
Work-
manship—
Hard
Wood



80 Different Styles and Sizes for Private Residences, Hotels, Stores and Yachts

In the Mackinaw the Dry, Cold, Pure Air descends from the ice to the provisions.

The Mackinaw is Perfectly Dry.

The Mackinaw preserves all Perishable Foods with very little ice.

The Mackinaw has very large Provision Storage Capacity.

The Mackinaw has Shelves which slide in or out without obstruction.

The Mackinaw has unusually Thick Walls filled with Pure Charcoal.

The Mackinaw has a Drip Pipe which can be Taken Out and Cleaned.

The Mackinaw has Solid Bronze Self-Locking Latches.

MACKINAW REFRIGERATOR COMPANY

No. 106 Chambers Street, New York

Hotel New Point

Amityville by the Sea, L. I.

Phone 139

Open All The Year



Accommodates 300.
Special Rates by
the Week.
Garage with Hotel.
One of the largest
and best hotels on
Long Island.
Directly on Great
South Bay.
Surrounded on
three sides by water.
Exceptionally
large, well fur-
nished rooms.
Single and in suites
with private baths.
Bathing Boating
Fishing
Hunting
Lawns Tennis
Baseball Croquet
All outdoor
Amusements
Large Grounds,
Booth, Etc.

GRILL ROOM—CAFE—RESTAURANT

American Plan, \$4.00 per day upwards.
European Plan, \$2.00 upwards.

Hotel Delavan

SAYVILLE, LONG ISLAND,
NEW YORK

IS attractive and home-like, accommo-
dating 75 guests, is situated on Foster
Avenue, in full view of the water,
and but three minutes' walk from bay.
Brown's river and golf links. Extensive,
well-shaded grounds for croquet and ten-
nis, and large vegetable gardens place it
first in beauty and desirability of location.
The HOTEL DELAVAN caters only to
the highest class of patronage and has an
established reputation for comfort, cleanli-
ness, and excellence of table. Electric
lights in all rooms. Bath rooms on each
floor, porcelain tubs, hot and cold water.
Automobile and carriage accommodations. Terms
on application. Open from June to October.

ALFRED SYKES, Proprietor

Telephone Connection Sayville, L. I., N. Y.



FREEPORT'S LEADING HOTEL

The Crystal Lake Hotel and Cottage

OPEN ALL YEAR

AUTOMOBILE PARTIES ACCOMMODATED
GRILL - - - - - MUSIC

A. E. FROST, Prop.

DO NOT BUY
LONG ISLAND REAL ESTATE
until you have read a free copy of our
BELLMORE
FARMS
BOOK

TELLS ALL ABOUT THE BEST
SMALL FARMS
for Suburbanites

LONG ISLAND FARMS
are famously Fertile
and Chicken Farms
PAY BIG PROFITS

Bellmore is on the South Shore of Long
Island and adjoins

FREEPORT
and **MERRICK**
New Houses

Small cash payment, Balance
\$15 A MONTH

6 room houses for \$1850. that cannot be
duplicated in city limits for less than \$3500.
Adjoining schools, stores, etc., and convenient
to Railroad Station.

Lots, Villa Plots
and Building Sites
in the Choicest Location in

FREEPORT
Merrick and Bellmore

At Low Prices and on Easy Terms

Send to-day for a free copy of our Bellmore
Farms Book, together with free Railroad Tick-
ets to inspect properties.

Long Island Realty Co.
258 Broadway
NEW YORK

ARTHUR MULLER, Pres.

A. SCHWICKERT, Vice-Pres.

RICHMOND HILL
FOUNDRY CO.

GRAY IRON
CASTINGS
A SPECIALTY

RICHMOND HILL, L.I., N.Y.
Grant Street and Fulton Avenue

Phone, 64 Richmond Hill

Joseph McGee
Iron & Brass
Foundry Co.

Pattern
and
Machine
Work of
Every
Description

ESTABLISHED 1870

FREDERICK RUSSELL, President

51 to 67 Sixth Street
Long Island City, N. Y.

TELEPHONE No. 3661-2 HUNTERS POINT

Babylon, Long Island

on Great South Bay

Express Station

One Hour Out

HAS MORE TO OFFER the summer or all year home seeker than any other place on the South Side. For list of desirable houses to rent or particulars of property for sale, address

JEREMIAH ROBBINS

Maidstone Inn

and Cottages

Easthampton

COMBINES the advantages of Sea Shore and Country. Fine Ocean Bathing and Shady Streets. Beautiful Country Club, Tennis Courts, Golf Links. Good Roads for Automobiles. House accommodates 50—Dining Room 100. Telephone Connection.

House open June 1st to
October 1st. Apply as above

Spend your Vacation at the PATCHOGUE INN

A SUMMER Home for refined people who seek hospitality. Near the Great South Bay. Beautiful grounds. Choice location. Lighted by electricity throughout. Modern Plumbing. Superior quality family table. Fine vegetable garden. Express trains through tunnels direct to heart of New York City. Terms \$10.00 to \$15.00 per week. Open June 24th to October 1st. Automobiles and horses accommodated. Phone 53-L Patchogue.



Shore Acres Inn

E. SETAUKET, LONG ISLAND

Directly on the water front

PPRIVATE pier, fine bathing, boating and fishing. Modern improvements. Large lawn. Tennis courts. Garage.

Rates \$8 and up. June to October

WM. D. OAKES, Proprietor

QUALITY IS ECONOMY

MURPHY House Varnish, *Transparent Wood Finish*, lasts enough longer to make it cheaper than cheaper varnish would be as a gift. Konkreto makes Concrete Floors like Tiling. *Just as good for Cement.*

MURPHY VARNISH CO.
NEWARK NEW JERSEY

Williams & Marcus Company

SPECIALISTS IN CATALOGUES AND STEEL
DIE WORK FOR HOTELS AND GENERAL
LINE OF PRINTING

212-222 South Darton St.
PHILADELPHIA, PA.

L. Middleditch Co.

Printing

Book, Job
and
Law Case
Printing

Railroad
Printing
a
Specialty

ESTABLISHED 1876

65 and 67 DUANE ST.
(Near Broadway)
NEW YORK

Telephone 5533 Worth

American Railway Supply Co.

FIREMAN BADGES
POLICE BADGES
RAILWAY BADGES
ALL KINDS OF BADGES
AND
TIME CHECKS

24 Park Place, New York



Arborlea Inn

IN THE PINES OF LONG ISLAND

A home-like, refined and well-managed Inn for select people

Rates \$2.00 to \$4.00 per day, \$12.00 to \$25.00 per week. Private baths

FOR FURTHER INFORMATION, ADDRESS
H. G. WAGONER, Manager
BRENTWOOD, L. I., N. Y.



DR. ROSS' Health Resort

BRENTWOOD, NEW YORK

*In the Pines of
Long Island*

Offers the comforts and convenience of a modern Inn. Under the care of Physicians and Nurses

FOR BOOKLET AND RATES, ADDRESS
W. H. ROSS, M.D.



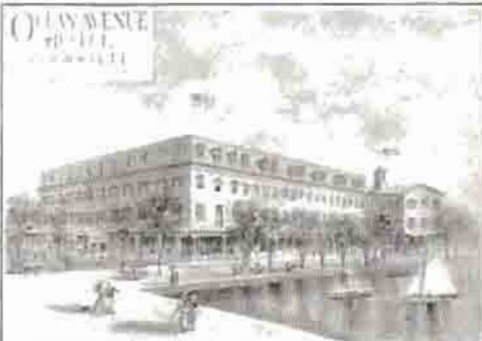
SEA VIEW HOUSE

Equipped with All the Modern Improvements

IT IS situated on an eminence overlooking the beautiful surrounding country and the waters of Peconic Bay; has unsurpassed facilities for Bathing, Boating and Fishing. Is surrounded by abundant shade trees, large verandas, etc. Picturesque drives in all directions over good roads. Table bountifully supplied with poultry, eggs, milk and vegetables from farm controlled by the management. Houses reached by train or boat daily. Rates: Single Rooms \$10.00 and up; Double Rooms, \$25.00 and up. See L. I. R. R. Time Table to Noyack Road Station and Sag Harbor. The "Noyack Road Station" has been opened for the convenience of the guests of this house. Tel. 18 Sag Harbor.

J. K. MORRIS, Proprietor.

Booking Office, The Mainfield, 12 West 44th St., New York



OCEAN AVE. HOTEL

PATCHOGUE LONG ISLAND

Directly on water front. Open May first.

Yachting, Fishing, Motoring, Bathing. Fine roads for automobiling. Garage. Modern appointments.

SANFORD WEEKS, Owner and Prop.

HALE AND KILBURN COMPANY

Manufacturers of

ALLSTEEL CAR INTERIORS
STEEL CAR SEATS
STEEL BUILDING TRIM
STEEL AUTOMOBILE BODIES
ETC., ETC.

30 CHURCH STREET
NEW YORK

Fire - Brick
Drain Pipe
Flue Pipe
Fire Mortar

TELEPHONE CALL
138 GREENPOINT

**Greenpoint
Fire-Brick
Co.**
TRADE MARK
ARMOR
REG. U. S. PAT. OFF.

413-421 Oakland St.
BROOKLYN, N. Y.

OFFICE
111 CLAY STREET

Cupola Brick
Bakers' Tiles
Wall Coping
Tiles & Blocks

TIDEWATER SHIPMENTS

SHIPPING PORTS

New York Philadelphia Baltimore
Norfolk

All Rail to Any Point

**PERCY HEILNER
& SON**

Mine Owners and Shippers of

Anthracite and Bituminous Coals

OFFICES:

NEW YORK, Whitehall Building, 17 Battery Place
PHILADELPHIA, Land Title Building, Broad and Chestnut Streets
BOSTON, Congress Building, 4 Post Office Square
SPRINGFIELD, Hitchcock Building, 318 Main Street
READING, Colonial Trust Building
CINCINNATI, Traction Building

Our Representative will call on inquiry

The Milton Mfg. Co.

MANUFACTURERS OF



**Cold Punched
Nuts**

Chamfered and Trimmed, Plain, Square and Hexagon. Also Semi-Finished and Finished Case Hardened Hexagon Nuts.



**Hot Pressed
Nuts, Washers,
Bar Iron, etc.**

Quality and Finish the Best. Send Specifications for Prices.

ADDRESS

THE MILTON MFG. CO.
Milton, Pa., U. S. A.



Greyloch Hall

Now remodelled and enlarged, offers superior accommodations for both Transient and Permanent Summer Guests. Rooms, single or en suite of two or three, with private bath. Terms, \$1.50 to \$4.00 per day. For further particulars and special terms for season, apply to

MRS. RICHARD MOTT

GREYLOCH HALL

Bayswater, Far Rockaway, Long Island



Grove Cottage

SITUATED ON SPORTSMEN'S CANAL

*Autos and Horses Accommodated
Open All Year Boat Anchorage*

C. JENSEN, Proprietor

*397 SOUTH GROVE STREET
FREEPORT, LONG ISLAND, N. Y.*

Telephone Connection



WILLOMERE HOTEL

BATH BEACH, LONG ISLAND

New Management

Combines Seashore and Country. House accommodates 250. Newly renovated. Beautiful Bathing Beach, with Private Bath Houses for Guests. Constant panorama of yachts and ocean liners. All ocean-going vessels passing within view. Excellent Service. Fishing, Boating, Base Ball, Dancing, Bathing, Music and other recreations and amusements. Ideal for vacationists and business people of the city, being Forty minutes from Brooklyn Bridge, at a 2c fare. Business and vacation combined. Cooling, refreshing, invigorating, beautiful, useful. Rates Reasonable. Send for illustrated booklet.

HENRIETTA CHAMBERLAIN, Proprietress.



Hotel Arlington, Bayville

THIRTY MILES FROM NEW YORK

SURROUNDED by water; north, Long Island Sound; east, Oyster Bay Harbor; south, Bayville Harbor. Established reputation for comfort, cleanliness and a generous table. Bath rooms, modern plumbing, hot and cold water on every floor, electric light and gas all over the house; both hot and cold bathing; fine boating and fishing; long distance telephone. Special rates by week and season. Transient rates \$2.00 up. Accommodates 100. Three miles from Oyster Bay Depot. Our auto business meets all trains at Oyster Bay Depot. Accommodation for automobiles and horses.

Telephone Number 172-R Oyster Bay.

Open all year. Booklets.

ROBERT A. BESHIAN, - Manager

HOTEL NASSAU LONG BEACH, L. I.

A FIREPROOF European plan hotel of 350 bedrooms—most of them communicating with private bath (hot and cold salt water).

The greatest automobile rendezvous in America.

The highest type of metropolitan cuisine and service.

MERRY & BOOMER, *Mgrs.*

Telephone Call:
100 Long Beach



The Miamogue SOUTH JAMESPORT, L. I.

THIS new and handsomely appointed house is situated in the beautiful village of South Jamesport, within a few feet of Peconic Bay, famous alike for its superb sailing, fishing and bathing advantages. Long-distance Telephone. *Terms Reasonable.* All applications for board should be addressed to

L. SEYMOUR CORWIN,
South Jamesport, L. I.

Clarendon Hall

CENTRAL AVENUE COR., LOCKWOOD AVENUE
FAR ROCKAWAY, NEW YORK

MAY TO OCTOBER

Refined, homelike house; light, comfortable rooms. Fine parlor and large piazzas. Excellent table. Five minutes' walk to beach or depot. \$12 and up weekly. \$2.50 and up daily. Special rates for season guests.

HARRY C. GUNTHER

PROPRIETOR



The INN and BATHING BEACH POINT O' WOODS, L. I.

Ocean on one side

Bay on the other

Point O' Woods is a summer colony of the highest class. Practically six miles out in the open sea. *For rates and information apply to*

POINT O' WOODS ASS'N

C. W. NASH, *Sup't*

BAYSHORE,
L. I.

AFTER JUNE 1ST
POINT O' WOODS, L. I.



La Grange House

A SELECT FAMILY RESORT

NEAR GREAT SOUTH BAY
CHOICE LOCATION
LIGHTED BY ELECTRICITY
MODERN PLUMBING
ABUNDANT SHADE TREES
LARGE LAWN. TENNIS.
BATHING. BOATING. FISHING.

Mrs. E. WALKER, Proprietor
BABYLON, LONG ISLAND
N. Y. CITY ADDRESS: 243 W. 76th ST.



View of Sound from Inn porch

Battershall Inn

SEA CLIFF, LONG ISLAND

Commuting Distance of New York
Fine Bathing, Boating and Fishing

Elevation 200 Feet No Mosquitoes
Send for Booklet

Mrs. J. M. GILLAN, Lessee



Laurel House, PATCHOGUE, L. I.

Phone 78 Patchogue

THIS modern up to date family hotel, open June to October, is on Ocean Ave., few minutes Great South Bay and bathing, boating, fishing, sailing, etc. Beautiful walks and drives on ten acres of ground surrounded with pine trees. All large and outside rooms. A number single and en suite with private baths, electric lights and good furnishings. Large lawn with tennis court, bowling alley and billiard room. We set a first-class table supplied from our own farm. Beautiful parlors and dining rooms all electric lighted. A nice clean house with solid home comforts. It is elegant without extravagance. Music. \$10.00 to \$20.00. Send for booklet.

E. FISHER, Owner and Manager.



THE TUTHILL POINT

"ON GREAT SOUTH BAY"

EAST MORICHES, LONG ISLAND

TEN acres of lawn, shade and shore. Private pier, surf bathing, sailing, fishing, tennis, music, dancing. Sanitary plumbing. Excellent table and service. Automobile accommodation. Write for booklet and rates. Telephone 53.

EDWARD SAMMIS

ALSO

"HOTEL CLINTON" EAST ORANGE, N. J.

SETAUKET SPRING WATER
(Natural)



Setauket Spring Water Co.

Salesroom and Office

609 DEGRAU ST., BROOKLYN, N. Y.

Telephone 3346 Main

Commonwealth Roofing Company

CONTRACTORS

COAL TAR PITCH, FELT &
GRAVEL OR SLAG ROOFING
COAL TAR PITCH & FELT
WATERPROOFING AND
DAMP-PROOFING

OWEN McBREEN, Manager
Telephone Call, Greenpoint 4

Office, 49 Greenpoint Avenue, Brooklyn, E. D.
General Office: 17 Battery Place, New York
Branches: New York, Brooklyn, Jersey City,
Newark, Paterson, Utica.

THE UNION STOVE WORKS



C
C
O
M
B
I
N
A
N
D
T
I
O
N
S
R
A
N
G
E

70 BECKMAN STREET, NEW YORK, N. Y.

PANTASOTE

A perfect substitute for leather
and one-third the cost of gen-
uine leather. Will be pleased to
forward samples upon application.

THE PANTASOTE COMPANY
11 BROADWAY, - - NEW YORK

ESTATE OF THOMAS MORGAN COMMISSION MERCHANT

JOSEPH DRAKE, General Superintendent
Wholesale Dealer in

Hay, Straw, Grain, Etc.

Elevators and Warehouses:

Foot Taylor Street
Brooklyn, N. Y.

Foot East Avenue
L. I. City, N. Y.

Liberal Advancements on Consignments. Direct Receiver.
Sight Draft with Bill of Lading. Correspondence Solicited.

Address all Communications to L. I. City Office

REAL ESTATE BOUGHT AND SOLD

Cottages for rent at East Hampton, Amagansett and Wainscott. Also summer boarding house. Accommodate fifty. For terms address

B. M. OSBORNE, Real Estate Agent
EASTHAMPTON, L. I., N. Y.

N. Y. TOWER N. Y.

Manufacturing and Novelty Co.

STATIONERS

Main Store 306-308 Broadway
Fancy Goods Dept., 750 Broadway
Branch Store, 18 E. 23rd St.

NEW YORK CITY, N. Y.

Shoreham Beach Inn

GEORGE LYNN, Proprietor

Dining Room overlooking the Sound. Water used at the Inn from our own Artesian Spring, and Ice Manufactured from the same. Automobile Parties catered to at all hours.

Telephone, 4 L Shoreham, Long Island

Southold Hotel

SITUATED in the center of Southold village, near station; Methodist-Episcopal, Presbyterian and Catholic churches; and $\frac{1}{2}$ mile from Peconic Bay. Good bathing, fishing and boating. Rates, \$10.00 per week. Apply

Southold Hotel, Southold, L. I.

JOHN J. COONEY, President
H. J. ECKSTEIN, F. Pres. C. T. COONEY, Sec'y-Treas.
COONEY, ECKSTEIN & CO.
Incorporated

Yellow Pine Lumber and Rail Road Ties

66 BROAD STREET, NEW YORK

JACKSONVILLE, FLA. Bishop Building	SAVANNAH, GA. German's Bank Bldg.
FERNANDINA, FLA. Foot of Centre St.	BRUNSWICK, GA. Bruner's Bldg. & Trust Bldg.
TAMPA, FLA. Rampy & Knight Terminals	GULFPORT, MISS. Hewes Building
MOBILE, ALA. First Natl. Bank Bldg.	MOSS POINT, MISS. First Natl. Bank Bldg.

Hotel Pasadena

ANNIE S. GRASER

F. A. GRASER

GROVE AVENUE, OCEAN FRONT

HOLLAND STATION
ROCKAWAY BEACH
NEW YORK

TELEPHONE TWO NINE TWO HAMMELS
OPEN MAY THIRTIETH

TERRY & BREWSTER "Brokers" in BAY SHORE, L. I.

Tel. 8-R **REAL ESTATE** ON THE

South Shore of L. I. AND THE Great South Bay

THE YACHTMAN'S PARADISE—THE HOME OF BLUEFISHING

Country Estates and Homes	Furnished Cottages	Farms, Acreage Water Fronts
------------------------------	-----------------------	--------------------------------

FOR SALE AND TO LET



Fishing

Bluefish,
Weakfish,
Bass, etc.

SALTAIRE

The Children's Paradise

DO you really know all the pleasure of living in a cosy little bungalow close by the water and away from the congested city with its heat and noise? SALTAIRE, Fire Island Beach, the little summer-home community, with its quaint, roomy bungalows, each having water, gas and sewerage, is most beautifully located on a peninsula formed by the Atlantic Ocean and Great South Bay.

It is the ideal place for the little folks to romp and play. For the tired city mothers and the chained-to-the-desk-all-day fathers, it means repose, peace and happiness. It means cool, breezy days, and nights of sound, healthful sleep.

REMEMBER, you can own a home in SALTAIRE at a price and on terms that are within your reach.

Write or 'phone for full descriptive booklet.

Boating

Saltair's natural harbor. Ideal for anything from row-boat to yacht

Bathing

Still water and ocean bathing

Beach

Miles of clean, sand beach forms a playground for children

FIRE ISLAND BEACH DEVELOPMENT CO.

Marbridge Building, Broadway and 34th street

NEW YORK

'Phone, Greeley 1697

N. Y.

